

autumn | arts 
TRAIL

OCTOBER 2025



WWW.AUTUMNARTS.ORG

stroud & the five valleys, gloucestershire

open studio weekends 18-19+25-26 OCTOBER

autumn | arts TRAIL

OCTOBER 2025

*“Always my favourite weekends of the year!
I love everyone seeing what an extraordinary level of talent and
craftsmanship we have in the Stroud area.
Also artists and makers are across the generations, which I love.”*

Lulu Guinness

Patron of Autumn Arts

OPEN STUDIOS

Saturday 18 – Sunday 19 October 11am – 5pm

Saturday 25 – Sunday 26 October 11am – 5pm

EVENTS

Saturday 6 October – Sunday 2 November

some artists and venues may have special opening times



Sue Smee **co-ordinator + editor** | Chris J Bailey **design art director**

WWW.AUTUMNARTS.ORG



penny campbell | photo: sarah turton



welcome

Welcome to the *Autumn Arts Trail 2025*, your opportunity to explore open studios and exhibitions. The artists have spent time preparing for their visitors, looking forward to sharing techniques, expertise and conversations; the studio is more than a marketplace. The transaction can be as simple as an appreciation, a resonance.

The name tells the story and the work reflects the place. We have artists and makers whose support we greatly value; this Stroud community of creatives is special and welcoming and there's always room for more. The team has been joined this year by Sarah Turton, a photographer with an impressive pedigree, who has captured some of the artists at work for these pages.

The *Autumn Arts Trail* is a window into each artist's practice; it's enticing, inspiring and impressive. Stroud and its valleys are blessed with an exceptional mix of talent and skill, a magnet for those who make and those who appreciate

Sue Smee

Co-ordinator & Editor



things to know

The *Trail* has been laid out geographically to make it easier to cover the ground, with neighbouring artists grouped together, mostly within walking distance of each other. Take note of the fantastic outliers – you could start at the periphery and plan your route back to the centre, and take advantage of the cafés along the way.

Stroud

The train and bus station are in the town centre and there are many bicycle parking rails. There are several car parks in the town centre and free parking is available in the streets away from the shopping areas.

Foot and pedal

Several venues are also accessible from the old railway footpath and cycle track between Stroud and Nailsworth, and the canal towpath.

Nailsworth + Painswick

Ample parking is available in the centre of both locations.

Access

All venues and studios have an accessibility code for pushchair and wheelchair users. If you have further access needs please check with the venue before visiting.

Access key:

- **Good**
Wheelchair access to all parts of the venue
- **Partial**
Wheelchair access to limited areas of venue, including uneven surfaces, narrow access
- **Not good**
No wheelchair access, including steps

Liability

The organisers and venues do not accept liability for any damage, injury or loss sustained by any member of the public or to their property whilst visiting any of the open studios, events or exhibitions.

some artists and venues may have special opening times

*the artwork displayed on the Trail does not
reflect the taste, ethos or opinion of Autumn Arts*





information



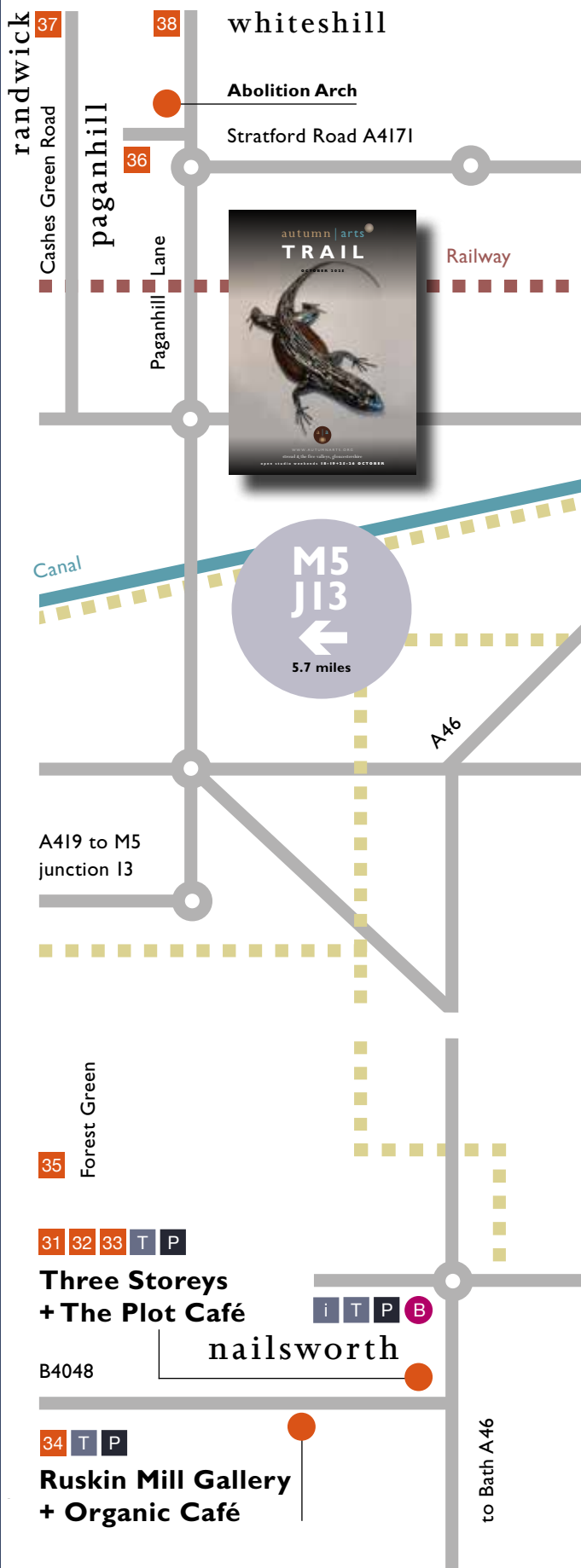
look for the special signs near the venues
+ for access code see page 02

TRAIL ARTISTS

	page		page
1 Alan Evans	20	23 Carol Honess	47
2 Lucy Inder	22	24 Creating Spaces	48
3 Andy Bradley	23	25 Bill Rickinson	51
4 Corinna Mainberger	24	26 Susanna Birley	52
5 Eva Pollard	25	27 Daniel Evans	55
6 Deborah Cox	26	28 Jo Millak	56
7 The Bigger Picture	27	29 Darren Rumley	57
8 Nicola Builder	29	30 Rod Nelson	59
9 Melvyn Warren-Smith	30	31 Sarah Turton	60
10 Christina Bingle	31	32 Victoria Orr Ewing	61
11 Sophy Thomas	32	33 Vanessa Wilson	62
12 Emily Lucas	33	34 Earth Fire Iron	63
13 Albie Lucas	34	35 Geoff Sumpter	65
14 Henrietta Park	35	36 Paintprintclay	67
15 Kim Jarvis	36	37 Jacq Garner	68
16 Frances Clark-Stone	37	38 John + Penny West	71
17 Chris Beckett	38	39 Nadia Ryzhakova	72
18 Penny Campbell	40	40 Grant Barnett	74
19 Helen Lomberg	41	41 Valerie Jordan	75
20 Kerry Phippen	43		
21 GPC	44	* & +	76
22 Wendy Rhodes	46	events	



WWW.AUTUMNARTS.ORG





painswick

i T P 39 40

sheepscombe 41

1 T P

Museum in the Park

to Gloucester A4173
to Painswick A46

2 The Yard

Slad Road B4070 3



Star Anise Café

STROUD

to Bisley

Cainscross Road

Aleph

High Street

Nelson Street

6 7 8

The Sub Rooms

Rodborough Hill

Shed Poets Society mini gallery



17 18 19

20 21 22
23 T P

Griffin Mill

Pegasus Arts

KEY

- A Railway Station
- B Bus Station
- Footpath
- Footpath & cycle track
- Railway
- Canal
- Pedestrianised area
- i Tourist Information
- i Canal Visitor Centre
- T Toilets
- P Parking



map not to scale

Access
See code on page 02

The Long Table

London Road A419

Canal

brimscombe

30 box

27 28 29

Burleigh Court Hotel

Railway

A419 to M4 junction 15

High Street

chalford

25 26

map: © chris j bailey 2025

AUTUMN ARTS TRAIL 2025





melvyn warren-smith



ART

WWW.AUTUMNARTS.ORG

JUDITH WATT

portraits: Sarah Turton

"In 1910," the legendary publisher, art director and editor-in-chief Lucien Vogel told journalist Georges Charensol, "there was no really artistic fashion magazine, nothing representative of the spirit of the time. My dream was therefore to make a luxury magazine with truly modern artists [*Gazette du Bon Ton*] ... to offer a women's magazine of a new type, artistic and representative of the times.

I was assured of success, because when it comes to Fashion, no country on earth can compete with France."

Judith has spent much of her life studying the history of dress, growing up during a time that was rich with ideas and inspiration for someone who had a fascination for clothes. "My parents were artists and I studied history of art. Having been

introduced to Bloomsbury as a child very early on, I was aware of 'artistic' dress with Rossetti, Morris, Whistler, for example."

She was lucky to be given a place at the Courtauld to study for an MA in the History of Dress. "It was life changing! Loved it. I finally became a 'good' student!"

"I was fascinated by Biba, second-hand clothes, old movies... I went on to collect magazines, fashion plates, and particularly rare books on fashion and art/fashion magazines, like the *Gazette du Bon Ton*."

She is particularly interested in passing on all her knowledge and research by developing The Fashion Library. "Because after years of teaching and seeing the knowledge and experience of research





JUDITH WATT

shrinking to a digital encounter, I know that this needs to be recalibrated in order to excite and instigate ideas, response, design, writing. I want to open this up to the people who would normally have gone to Art School but now cannot, and are choosing apprenticeships or other routes.”

Judith feels strongly that our left-field approach to ideas and inventing clothes is key to British culture, because, she says,

“compared with France, we don’t have a fashion culture, we have a style culture.”

In her talk *Serious Frivolities* with Sarah Atkinson at The Sub Rooms, she will trace the line from the *Gazette du Bon Ton* to the iconic fashion of Quant’s sixties, Biba to punk in the seventies, the (not-so-) New Romantics of the eighties to the present day. “But,” she says, “the *Gazette du Bon Ton* is the starting point, the kernel.”

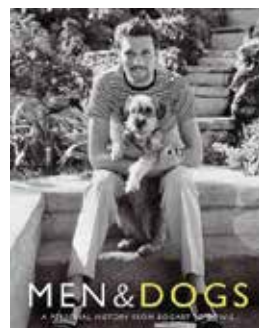
ottoline

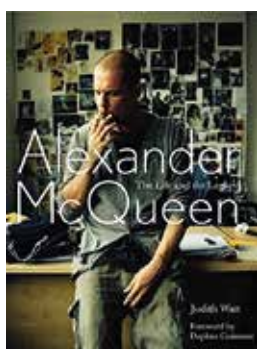
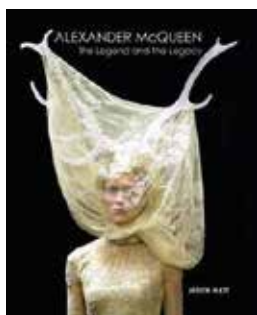
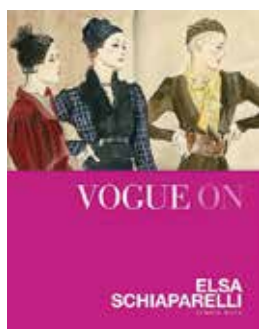


judith + jinx

a | a

AUTUMN ARTS TRAIL 2025





SARAH ATKINSON



Sarah Atkinson has had a distinguished career in fashion, running her own fashion label as well as designing, delivering and managing the creative arts courses at the University of the Arts London.

Now working as an academic consultant, she maintains her own creative practice. She recently worked on the prestigious exhibition, *The BIBA Story, 1964-1975* at the Fashion and Textile Museum in London. We're delighted to welcome her to Stroud Sub Rooms and the *Autumn Arts Trail* talk *Serious Frivolities* with Judith Watt.

* See page 83 for more information.

“Our left-field approach to ideas and inventing clothes is key to British culture. I was fascinated by Biba, second-hand clothes, old movies...”



NICOLA BUILDER

portrait: Sarah Turton



AUTUMN ARTS TRAIL 2025

After learning the Saori approach in the USA and Japan in 2009, Nicola brought Saori to the UK and established Wayward Weaves, the first Saori studio in Europe, in 2012, now at 21 George Street. Nicola specialises in Saori, a unique and intuitive form of hand weaving from Japan, running classes and workshops from her welcoming, restful creative studio in the heart of Stroud.

In the Saori approach, there are no mistakes, only discoveries. Each thread becomes alive and the possibilities are only limited by our imaginations. “In Saori, we do not weave to achieve a perfectly even cloth but to develop our individual creativity.” The looms and method have been developed to make the whole process as accessible and playful as possible. The studio is a unique space where there are ‘no rules and no mistakes’.

Misao Jo (1913-2018), the Japanese textile artist, weaver and educator/founder of Saori weaving, said, “Saori weaving can be compared to a paintbrush that adds colour to

a picture or a fountain pen used to write literature. Like them, the weaving itself is just a tool to express our true selves.”

Nicola agrees. “That freedom is what I love most, and is what I aim to help others experience when they come to a workshop: a sense of letting go, of a particular joy arising from simply sitting at the loom and watching as colours and textures come together in surprising, wonderful ways. Many people say that it feels like stepping into another world – a little creative holiday where you leave with something completely unique that only you could have made.”

Nicola and other local weavers are demonstrating on the Saori looms throughout the *Autumn Arts* week, and the studio is hosting an exhibition of Saori weavings (check website for times).

* *Discovery workshops are on Sundays 19 and 26 October and during the week. Bookings via website waywardweaves.co.uk. See page 29.*



“Saori weaving can be compared to a paintbrush that adds colour to a picture or a fountain pen used to write literature. Like them, the weaving itself is just a tool to express our true selves.” **Misao Jo**





TRAIL

WWW.AUTUMNARTS.ORG



* artists

Grant Barnett	Helen Lomberg
Christina Bingle	Albie Lucas
Susanna Birley	Emily Lucas
Andy Bradley	Corinna Mainberger
Nicola Builder	Jo Millak
Penny Campbell	Rod Nelson
Kathy Clare	Jonathan Oakes
Frances Clark-Stone	Victoria Orr Ewing
CSA	Henrietta Park
Deborah Cox	Kerry Phippen
Alan Evans	Eva Pollard
Daniel Evans	Wendy Rhodes
Jane Foot	Bill Rickinson
Jacq Garner	Darren Rumley
GPC	Nadia Ryzhakova
Jon Hastings	Mandy Scott
Carol Honess	Geoff Sumpter
Maggie Howe	Sophy Thomas
Lucy Inder	Sarah Turton
Kim Jarvis	Melvyn Warren-Smith
Valerie Jordan	John + Penny West
Elizabeth Lee	Vanessa Wilson

jo millak | photo: sarah turton



daniel evans | photo: sarah turton



TRAIL TASTER

Tuesday 14 – Sunday 26 October

A selection of work from participating artists

★ including *Trail artists portraits* by Sarah Turton

Tuesday – Friday 8.30am – 4pm | Saturday 10am – 3pm | Sunday 10am – 4pm

Free admission

Three Storeys | Old Bristol Road, Nailsworth GL6 0JE

threestoreys.co.uk | see page 76 for more details

→ Three Storeys is next to Nailsworth Town Hall. Nailsworth can also be reached by the old railway cycle track and footpath from Stroud. Ground floor café, gallery and toilets are fully accessible with steps to first floor studios. Access: ●







autumn | arts 

TRAIL

2025

OPEN STUDIOS

STROUD TOWN

At the meeting place of five beautiful Cotswold valleys and a lively, award-winning farmers market, you will find artists and makers within an easy stroll. Enjoy the creative atmosphere of the cafés and eateries along the way.

The venues in this section are at walkable locations from the town centre.



WWW.AUTUMNARTS.ORG



I exhibition

Earth Fire Iron: Alan Evans and the New Iron Age, 1980-2025

artists in iron

**Museum in the Park,
Stratford Park, Stratford Road,
Stroud GL5 4AF**

01453 763394

muesuminthepark.org.uk

Free admission



This exhibition celebrates the work of Alan Evans (1952-2023) and his fellow artist-blacksmiths who brought new vigour and excitement to this traditional craft from 1980 onwards. The exhibition illustrates the impact on Alan Evans of his upbringing as part of the Whiteway colony, a radical Tolstoyan community near Stroud set up in 1898, and of Cotswold Arts and Craft traditions. Alan's first major commission, aged 29, was for the Treasury Gates at St Paul's Cathedral, London in 1980-81. The St Paul's maquette will be on show together with work by Alan and his contemporaries from Britain and the continent.

Also taking part are inspiring young blacksmiths from around the UK. Some sculptures are displayed in the enchanting Walled Garden behind the Museum. With beautiful borders designed by artist Cleo Mussi, this special place is one to discover and visit in every season.

photo left: © simon pizzey



Museum in the Park
Stroud District (Cotswold) Museum Service



alan evans | images courtesy of lesley green

Indoors, the Museum displays reveal fascinating stories of landscape and daily life in the Stroud District, a shop sells gifts and cards by local makers, and a self-service foyer café offers a selection of hot and cold drinks, cakes and snacks.

- ✳ Alongside the exhibition will be a string of exciting events and other exhibitions throughout Stroud and the surrounding area. For further details see the Museum's website www.museuminthepark.org.uk and page 79.

Earth Fire Iron is curated by Mary Greensted, George Breeze and Lesley Green. Supported by Arts Council England, Jinny Quinnell Memorial Trust, William A Cadbury Charitable Trust, Ann Albright, The Summerfield Trust, Stroud District Council, Stroud District (Cowle) Museum Trust and those who wish to remain anonymous.

- ➔ A short walk or drive from Stroud town centre. Access: ●





2 studio

Lucy Inder | painter

16 Folly Lane,

Stroud GL5 1SD

07799 570418

lucy@sundialhousedesigns.co.uk

lucyinder.co.uk | [@lucyinderartist](https://www.instagram.com/lucyinderartist)



Lucy is a landscape painter whose paintings are full of colour and pattern reminiscent of the Fauvists. She currently combines a career as an art tutor with painting from her studio using oils and acrylics. "I see walking through the hills and valleys as a feast of hues and patterns. Evocative repetitious lines and marks of the landscape remind me of childhood textiles, patchwork shapes and tasty colour. Painting has enabled me to build my own language of expression, creating marks and layers of colour and texture to describe the views which shape my life."

→ Half way along the old part of Folly Lane on left with parking on the street or driveway. You can alternatively walk from town up by Beeches Green small sloping footpath on the right. Access: ●



3 studio

Andy Bradley | painter

Number 4, The Woodlands, Uplands,

Stroud GL5 1QE

07970 590808

andybradley58@gmail.com

www.andybradley.co.uk | [andy_bradley_paintings](https://www.instagram.com/andy_bradley_paintings)



"I try and make paintings that convey an energetic, colourful and playful response to the subject. Using still life, landscape and gardens as a starting point, I explore the duality between reference and painted abstract form."

- Take the B4070 to Slad for about half a mile, turn left into Peghouse Rise, first left into Shepherds Croft and then first left into The Woodlands. Access: ●





4 studio

Corinna Mainberger | artist

RoseGoldSophia Studio

**Unit 9, Fromehall Mill, Lodgemore Lane,
Stroud GL5 3EH**

0791 4165409

naturopathy.outsidethebox@gmail.com

theartcure.uk

Corinna Mainberger, *Painter of The Spirit*, is a painter whose innermost wish is to help people to connect or re-connect to the spirit, to their inner source, via art, free of any dogma. She is hoping that her art has a soothing, nourishing, even transformative healing effect on people when sitting in a contemplative way with her pieces. Her art is weaving together her lifelong interests of healing and medicine, art, and spirit; her studio is a blend of treatment room, art studio and a touch of sacred temple. She has a love of layering colours, creating breath and depth, emphasising precious natural substances.

➔ Fromehall Mill has vehicle access via Lodgemore Lane off A419 Cainscross Road. Turn right after crossing the canal, go past the millpond on your left. Ample parking. Pedestrians and cyclists can also access via the canal towpath or the lane opposite the Clothiers Arms on the A46. Access: ●



STROUD TOWN





Eva worked for many years in the voluntary sector but always had an interest in art and design. She has been a full-time artist since 2014 and creates kiln-formed glass art, homeware and jewellery under the brand Eva Glass Design. Eva's work is informed by the Japanese concept of *ma* – the importance of the spaces around and between things. She utilises principles of balance and proportion in design processes with the aim that finished pieces have a harmonious feel. Her chief inspirations are nature, line and colour which she explores through a variety of kiln forming glass techniques and palettes.

→ For directions see opposite page. The ground floor studio is through the cobbled archway. Access: ●

5 studio

Eva Pollard | glass artist
Unit 4, Block 1, Fromehall Mill,
Lodgemore Lan, Stroud GL5 3EH
07531 191677
evaglassdesign@yahoo.co.uk
evaglassdesign.co.uk
[@evaglassdesign](https://www.instagram.com/evaglassdesign)





6 exhibition

Deborah Cox | artist

**Aleph Contemporary, Imperial House,
Station Road, Stroud GL5 3AR**

07740 950779

deborahcoxart@hotmail.com

deborahcoxgallery.co.uk | [@deborahcoxgallery](https://www.instagram.com/deborahcoxgallery)

Deborah Cox is a landscape painter exploring the ways in which the concept of landscape and the way it is portrayed has changed over the decades. She is also interested in how she can use her work as a painter to highlight injustices against the land without compromising the formal concerns within a painting such as attention to colour, tone, composition, design. After the success of her exhibition last year at Aleph Contemporary, she is producing a series of paintings influenced by the abstract paintings of Richard Diebenkorn.

→ Adjacent to Stroud railway station main entrance. Access: ●



STROUD TOWN

exhibitors

Jane Foot

Jon Hastings

Jonathan Oakes

7 exhibition

The Bigger Picture | artists

The George Room, The Sub Rooms,

3 George Street, Stroud GL5 1AE

www.artbyjanefoot.com

www.jonathanart.uk | www.art4oka.com

These three artists blend organic forms and subtle colours with dynamic textural surfaces and delicate mark making. This results in powerful images that demonstrate a balance between creative control and spontaneity. These are emotionally expressive and imaginative works that communicate the artists' deep immersion in their subject matter and the process of picture making. The proportions of the George Room allow these larger artworks room to breathe, offering the viewer a glimpse into the artists' contemporary outlooks, emotional journeys and imagined narratives, whilst still allowing them the space to discover and connect to their own meanings and forms within the artworks.

★ *Exhibition open Saturday 11 – Friday 24 October (excluding Sundays + Mondays). See page 80 for details.*
thesubroomrooms.co.uk

→ Stroud town centre. Access: ●

jon hastings



jane foot



jonathan oakes







8 studio

Nicola Builder | hand weaver

Weven, 21 George Street, Stroud GL5 3DP

07815 712792

info@waywardweaves.co.uk

@waywardweaves | waywardweaves.co.uk

Nicola practices and teaches Saori, an accessible and expressive form of hand weaving from Japan. With no pattern or rules to follow, the aim is to weave freely 'as a human being', accepting natural flaws and irregularities as a part of the process and simply inhabiting each moment as it comes. Nicola will be demonstrating on the beautiful Japanese looms and exhibiting her weavings alongside work by local Saori weavers.

✳ Nicola is offering taster sessions and workshops throughout the Autumn Arts week. See her website for more information and bookings: www.waywardweaves.co.uk

➔ Weven is on the one-way street between the Sub Rooms and Five Valleys Shopping Centre. Access: ●



STROUD TOWN

opposite page: photo sarah turton



9 studio

Melvyn Warren-Smith | artist

20 Nelson Street, Stroud GL5 2HN

07801 731962

melvyn@melvyn-warren-smith.com

melvyn-warren-smith.com | [@melvyn.warrensmith](https://www.instagram.com/melvyn_warrensmith)



Melvyn's work is figurative. The subjects are eclectic; landscapes and portraiture are in oil on canvas.

For many years he worked as a highly sought-after illustrator specialising in book covers. Stroud and the landscape – the river, the canal and commons – really inspire his work.

→ Top of the High Street in Stroud, over the zebra crossing, up Nelson Street halfway up on the right. There is a car park opposite the studio. Access: ●



10 studio

Christina Bingle | painter
Golden Seed Hub, top floor, Piccadilly Mill West,
Lower Street, Stroud GL5 2HT
07976 899517
chris@subtlecolours.com
subtlecolours.com | [@subtlecolour](https://www.instagram.com/subtlecolour)

"I love the texture and alchemy of oil paint, colour mixing, and the challenges of working with a limited palette. I have a degree in Fine Art but I have always been an artist. Living in Stroud for nearly 30 years, I have come to love the creative energy of the place; I find the wonderful landscape around the Five Valleys constantly inspiring."

- Go up the alley on Lower Street beside The Lindens kindergarten. At the top of the slope, go up steep black metal stairs outside left-hand building and through the door. Follow signs to the top floor. Park on Bowbridge Lane by Stroud Hospital. Access: ●





II studio

Sophy Thomas | potter
52 Bisley Road, Stroud GL5 1HF
07740 437320

Influences for Sophy's stoneware ceramics come mainly from Scandinavia's rich design history, as well as a family one with roots in Denmark. The childhood family crockery was a Finnish design classic, and craft was ever present in some form. Combined with her background in painting and printmaking, and a ten year stint working in magazine design, a new direction with clay has brought parts of all these elements together. The honest, functional everyday object in pleasing form, colour and texture is the aim. Throwing on the wheel, hand building, and testing different glazes offer endless exciting possibilities.

→ At the top of Bowbridge Lane by the hospital. From Stroud town, the first house on the right after the hospital car park, through the big gates. Access: ●



12 studio

Emily Lucas | artist

Epworth Lodge, Field Road, Stroud GL5 2HZ

07816 830755

emilylucas777@gmail.com | @emilylucasart

Emily is interested in the inadequacy of language to communicate interior knowledge, utilising gaps, fragments, repetitions and strange pairings to create alternative narratives and ambivalent meanings. Drawn and printed objects and plant forms from the natural world are paired with found text to generate an experience which is impossible to articulate through language alone.

→ A red brick house situated two doors down the hill from the Trinity Rooms. On street parking. Access: ●



STROUD TOWN



13 guest

Albie Lucas | artist

Epworth Lodge, Field Road, Stroud GL5 2HZ

07983 101115

albietlucas@gmail.com | @albielucasdrawing

Albie's drawings, prints, paintings and installations stand as a response to the frightening world. The work acts as an antidote to strange times in order to articulate difficult emotional upheavals.

→ A red brick house situated two doors down the hill from the Trinity Rooms. On street parking. Access: ●



14 studio

Henrietta Park | knitwear designer

1 Upper Dorrington Terrace, Stroud GL5 2JE

07932 780979

hello@henriettapark.co.uk

henriettapark.co.uk | @henrietta.park

Henrietta is a designer who works with British spun lambswool to create a distinctive and sustainable range of knitwear. Using a process of knitting and felting, she produces garments and accessories that are both practical and elegant, defined by pared-back silhouettes and unexpected colour combinations. The collection includes made-to-order pieces, offering customers the chance to choose their preferred colours and lengths. Her pieces are designed to be worn and loved across the seasons.

- Access to the studio is on Park Road just off Field Road, down from Stroud Hospital or up from Waitrose by the Stroud to Cirencester A419.
Access: ●





15 studio

Kim Jarvis | artist

2 Bowbridge Lane, Stroud GL5 2JS

01453 757474

mail@kimjarvis.com | www.kimjarvis.com

kimjarvisartist

Kim Jarvis is a landscape painter working in oils. Her love of wild coasts draws her to the far western reaches of the British Isles, in particular Scotland's west coast and islands. Her *en plein air* studies are very collectible and her larger paintings have often been exhibited at London's Mall Galleries and the Royal West of England Academy of Art in Bristol. Kim is showing new work which will include local studies of Gloucestershire and the Cotswolds. She regularly donates a proportion of her profits from sales to charities.

→ At the top of Bowbridge Lane by the hospital. From Stroud town, the first house on the right after the hospital car park, through the big gates. Access: ●



16 studio

Frances Clark-Stone | painter
22 Bowbridge Lane, Stroud GL5 2JL
07710 139150
francesfineart@outlook.com
francesclark-stone.co.uk | [@francescsart](https://www.instagram.com/francescsart)

STROUD TOWN



Frances Clark-Stone is a painter working in oil and soft pastel. Over 17 years her art practice has evolved from an eclectic mix of abstract and representational work to the collection of largely narrative paintings from her recent gallery solo show, which will be available to view. Often described as 'magical', 'dreamy' and 'spellbinding', places are either real, imagined or seen in dreams. Paintings are built up in layers often using printmaking techniques as well as brushstrokes and drawn line. Frances is currently represented by the Brian Sinfield Gallery in Burford, showing work from the show and work in progress.

→ Bowbridge Lane runs between Stroud Hospital and Bowbridge on the A419 London Road. Access: ●



17 studio

Chris Beckett | glass artist
**The Old Farmhouse, Rodborough Lane,
Rodborough GL5 2LH**
07918 507857
chrisb-noodle@hotmail.com
chrisbfusedglass.com | @chrisbfusedglass

Chris' sculptural glass art reflects the structural forms that are found in the natural world. Her use of techniques is experimental, with layers of symbolism taken from the mark making of our earliest ancestors. The process and transference of concepts, thoughts and feelings into colour, shape, light and form is intuitive, responding each time to the alchemy of the kiln. Commissions are welcome, as is participation to help create.



main portrait photo sarah turton

autumn | arts

TRAIL

2025

OPEN STUDIOS



THE OLD FARMHOUSE
The artists here offer you a variety of media. The Old Farmhouse garden is a beautiful setting for glass sculpture, in addition to the studio and house where you'll find functional domestic ceramics and willow work.

→ The Old Farmhouse is walkable from the canal at Bowbridge. By vehicle from Stroud, take the A46 towards Nailsworth. Turn left up Rodborough Hill to the Prince Albert pub. Turn left into Butterow West and follow the signs into and along Rodborough Lane. The Old Farmhouse is on the right towards the end, above a high stone wall with wooden trellis. Parking for three cars. Access via some shallow steps. Access: ●



WWW.AUTUMNARTS.ORG



BUTTEROW

18 guest

Penny Campbell | potter

**The Old Farmhouse, Rodborough Lane,
Rodborough GL5 2LH**

07817 437561

pencam30@gmail.com | pennycampbellpottery.co.uk

@pennycampbellpottery

Penny works predominantly on the wheel, making forms which are both functional and aesthetically pleasing. Her pots are intended to enhance our daily lives by adding beauty to our rituals. Throughout all stages of the making, she takes great joy in finding balance in each piece, from the initial throwing to the attaching of any handles, lugs and knobs and finally in the decoration and firing techniques.



→ See directions on page 38. Access: ●



BUTTERW

19 guest

Helen Lomberg | willow weaver

**The Old Farmhouse, Rodborough Lane,
Rodborough GL5 2LH**

07904 106024

wonderfulwillows@yahoo.co.uk

"I have been working with willow for 35 years. I find it endlessly fascinating and my creative journey with willow has lead me to some unexpected places. Fifteen years ago, I set up the not-for-profit *Gloucestershire Arts and Crafts Centre* (47 Westgate Street, Gloucester) out of the will to teach my craft locally, and to encourage shoppers to consider buying locally made craft, and more recently *The Gloucester Willow Coffins Company* with some of my students, using willow we grow and harvest ourselves."

→ See directions on page 38. Access: ●





autumn | arts 

TRAIL

2025

OPEN STUDIOS

GRIFFIN MILL & STROUD SOUTH

Griffin Mill is a handsome, three-storey, 17th-century red brick mill building that has seen many changes over its lifetime, now fittingly occupied by Pegasus Art and artists whose creative presence adds a working energy to the walls.



WWW.AUTUMNARTS.ORG



kerry phippen | photo sarah turton

Griffin Mill

London Road, Thrupp GL5 2AZ

- Griffin Mill Trading Estate is on the right on the A419 towards Cirencester. The mill is on the left, Pegasus Art Studios are up the metal stairs. Plenty of free parking in front of Pegasus and in the large car park to the left behind Bailey Paints. Access: ●



20 studio

Kerry Phippen | artist

**Studio 2, Gloucestershire Printmaking Cooperative,
Griffin Mill, London Road, Thrupp GL5 2AZ**

07972 265870

kerryhippenart1@gmail.com

kerryhippenart.com | [@kerryhippenart](https://www.instagram.com/kerryhippenart)

Kerry Phippen is a Scottish artist working in a range of media. She finds inspiration in Scotland's wild landscapes and the connections which happen between people and animals. Kerry lives on a former working farm in the Stroud valleys, regularly sighting horses, deer and other wildlife which reappear as characters in her imaginative paintings and drawings. Kerry will also be exhibiting a collection of 150 miniature watercolours painted every evening during the dark nights between October 2024 and March 2025.

- Studio accessed up metal staircase to front door of GPC.
Access: ●



THRUPP



THRUPP

21 exhibition

GPC

Gloucestershire Printmaking Cooperative | printmaking

16 Griffin Mill, London Road, Thrupp,
Stroud GL5 2AZ

01453 350885

info@gpchq.co.uk | gpchq.co.uk | [@gpc_print](https://www.instagram.com/gpc_print)

The GPC is a unique fine art printmaking facility in Stroud. Founded in 2005 by a small, committed group of printmakers – we are run by volunteer members and are now over 100 members strong. We provide a professional facility for artists to work and develop their practice and to enable people to learn a variety of printmaking techniques and skills through a rich programme of courses and workshops. We have built up excellent specialist studios for etching, relief printmaking, silkscreen printing, letterpress, stone and plate lithography. This exhibition showcases a range of recent work from our members.

→ Griffin Mill is on the A419 Stroud to Cirencester road. See page 43 for more details. Exhibition up the metal staircase into the Printmakers Gallery. Access: ●





22 studio

Wendy Rhodes | printmaker

**Studio 2, Gloucestershire Printmaking Cooperative,
Griffin Mill, London Road, Thrupp GL5 2AZ**

07434 589261

wrhodesart@gmail.com | wrhodesart.com

[@wrhodesart](https://www.instagram.com/wrhodesart)

Wendy works with a monochromatic palette in order to focus attention onto surfaces, structural elements and the dramatic effects of light, exploring the effect of shadows or rainwater on local bridleways. Drawings in graphite or charcoal, and copper plate etchings, exploit her rich visual language of mark making. She teaches etching and drawing.

- ➔ Griffin Mill is on the A419 Stroud to Cirencester road.
See page 43 for more details. Studio accessed up metal
staircase to front door of GPC. Access: ●



23 studio

Carol Honess | artist

**Studio 5, Pegasus Art Studios, Griffin Mill,
London Road, Thrupp GL5 2AZ**

07917 818500

carolhoness@gmail.com | fern_cottage_studio

Carol is an artist and printmaker, inspired by the details of the natural world. Seedheads, leaves and ferns are printed onto paper or clay. Ink drawings are hand printed by the artist to create cards and editioned prints. Some of these are then hand painted with watercolour, often in shades of indigo. The work is designed to share a fascination with – and encourage a closer look at – the intricacies and structure of the natural world.

★ *Carol will be in her studio for the first weekend only.
For the second weekend her work will be displayed in
Studio One at Pegasus Art.*

→ Griffin Mill is on the A419 Stroud to Cirencester road.
See page 43 for more details. The studio is accessed via
Pegasus Art shop. Access: ●



THRUPP





deborah harrison



jane yarnall

24 exhibition

Creating Spaces 2025 sculptors

An exhibition of indoor
sculpture by the Cotswold
Sculptors Association

**The Sanctuary Space,
The Long Table, Brimscombe Mill,
Brimscombe Hill, Brimscombe
GL5 2QN**

07970 224470

sarah.cushing@btinternet.com
cotswoldsculptorsassociation.com
@cotswold_sculptors_association

graham hawkins



“The Cotswold Sculptors Association is an inclusive, non-profit organisation run by its growing membership to promote the making and appreciation of sculpture in its many forms and mediums. We support sculptors from all walks of life, from professionals to those at the beginning of their journey. In collaboration with the *Autumn Arts Trail*, our exhibition *Creating Spaces* will challenge, amuse, evoke joy, sorrow and beauty. Showcasing over a hundred sculptures in the Sanctuary Space, we have a variety of work in diverse mediums including bronze, ceramic, wood, stone.”

✳ In support of *The Long Table* | free entry

➔ Accessible by foot or cycle from the canal path. Brimscombe is on the A419 from Stroud to Cirencester: turning off to the Long Table at Brimscombe Mill. Parking available, including disabled. Access: ●



Cotswold Sculptors Association



jan bruce



lynda knott



gina baum



andrew stevens



clare mahoney



chris elmer



cameron scott



carol orwin



BRIMSCOMBE



portrait photo sarah turton



WWW.AUTUMNARTS.ORG



25 studio

Bill Rickinson | ceramicist

2 Anchor Terrace, High Street, Chalford GL6 8DS

01453 731167

susannartist303@outlook.com

"I make thrown and hand-built ceramic forms using stoneware clay and glazes. Many are combined with found pieces of natural wood, stone or shells. I design each ceramic piece to reflect and enhance the character of the found object itself."

- Take A419 from Stroud to Cirencester. After approx 4 miles and past church on left, look for Victoria Works Studios on the right and fork left up Chalford High Street. After approx quarter mile (8 mins walk) see *Autumn Arts Trail* signs on the right. Limited parking and access only by fairly steep path, or stairs in the house. Access: ●



26 studio

Susanna Birley | artist

2 Anchor Terrace, High Street, Chalford GL6 8DS

01453 731167

susannartist303@outlook.com

susannabirley.co.uk

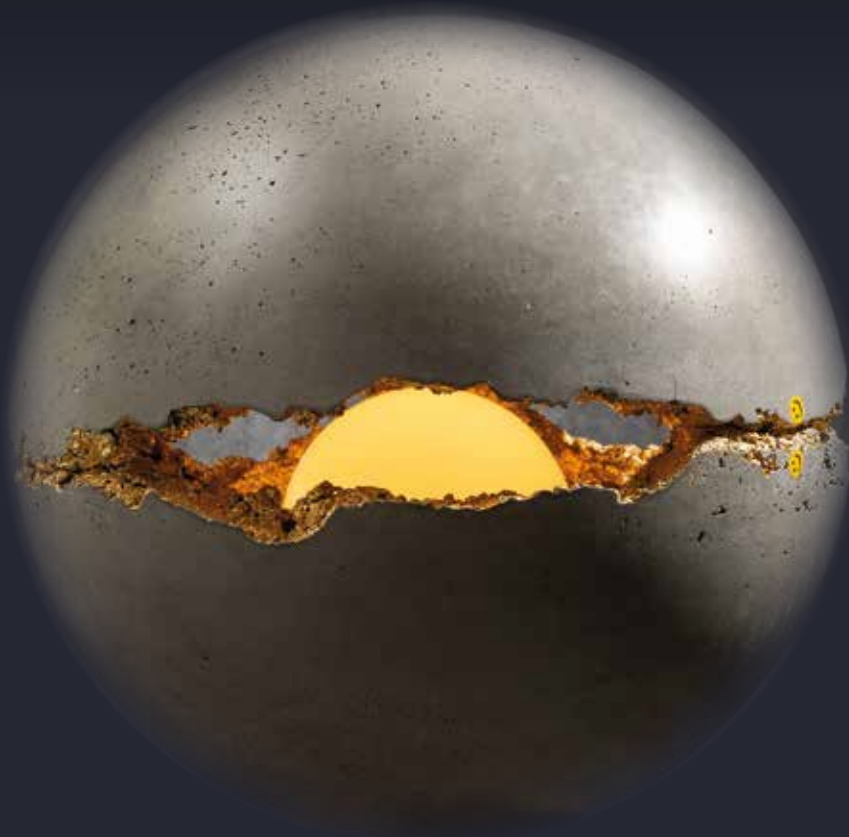
“Experimenting with textural effects and inspired by the natural world, my watercolour and mixed media paintings seek to exploit the beautiful transparent and unpredictable qualities of this exciting medium.” Abstract collages, cards, a ceramic cat and geese are also for sale. Terracotta and bronze portrait heads are displayed.

→ See Bill Rickinson, also at no 2 Anchor Terrace. Access: ●

portrait photo sarah turton

autumn | arts 
TRAIL
2025
OPEN STUDIOS

BURLEIGH COURT HOTEL



darren rumley



WWW.AUTUMNARTS.ORG



darren rumley | photo alexander caminada



BURLEIGH

BURLEIGH COURT HOTEL

Tucked away on the edge of the Golden Valley, the beautiful grounds of this intriguing Cotswolds hotel offer an enchanting location for sculpture on the *Autumn Arts Trail*.

Burleigh Court Hotel,
The Roundabouts, Burleigh GL5 2PF
01453 883804
burleighcourtcotswolds.co.uk

Stay for tea or some seriously good food from the award-winning restaurant with a locally sourced menu.

→ On the Cirencester Road across Minchinhampton Common, turn into Burleigh Lane and follow the road down the hill. Parking is available on the lane or in the car park. Access: ●

exhibitors

Daniel Evans
Jo Millak
Darren Rumley



27 exhibition

Daniel Evans | sculptor
Burleigh Court Hotel,
The Roundabouts, Burleigh GL5 2PF
07930 333949
daniel@stonecarvingworkshop.co.uk
stonecarvingworkshop.co.uk

"I'm a stone sculptor based in Miserden near Stroud. I am an experienced carver specialising in stone carving, letter cutting and wood carving, exploring sculptural forms and highly decorated carvings, methods and finishes. Outside the Trail weekends, visit my workshop in Miserden next to the village church by appointment."

★ *Daniel will be giving stone carving demonstrations throughout the Trail weekends.*

→ See opposite page for direction details. Access: ●



BURLEIGH



28 exhibition

Jo Millak | sculptor
Burleigh Court Hotel,
The Roundabouts, Burleigh GL5 2PF
07485 164193
josemillak@gmail.com | [@jomillak](https://www.instagram.com/jomillak)

“I’m an artist and art therapist, my primary disciplines being drawing, sewing and sculpture. Gloucestershire’s fauna is a constant source of inspiration to me; my sculpture attempts to capture the spirit of each animal and reflect the wonderment I feel for these creatures.”

→ See page 54 for direction details.. Access: ●



portrait photo: alexander caminada



BURLEIGH

Concrete as you've never seen it!

Inspirational polished concrete lighting, water features, pebble seating, 3D tiles and more. In a world of mass production we proudly produce small-run functional artisan pieces for home and garden. One Artisan is a premium supplier of design-led concrete products to the domestic and commercial sectors. Check out our extensive range of statement pieces all hand crafted in our Cotswold workshop or contact us for bespoke commissions.

29 exhibition

**Darren Rumley |
One Artisan**

sculptor

**Burleigh Court Hotel,
The Roundabouts,
Burleigh GL5 2PF**

07773 411969

info@oneartisan.co.uk

oneartisan.co.uk | @onerumley

→ See page 54 for direction details.. Access: ●

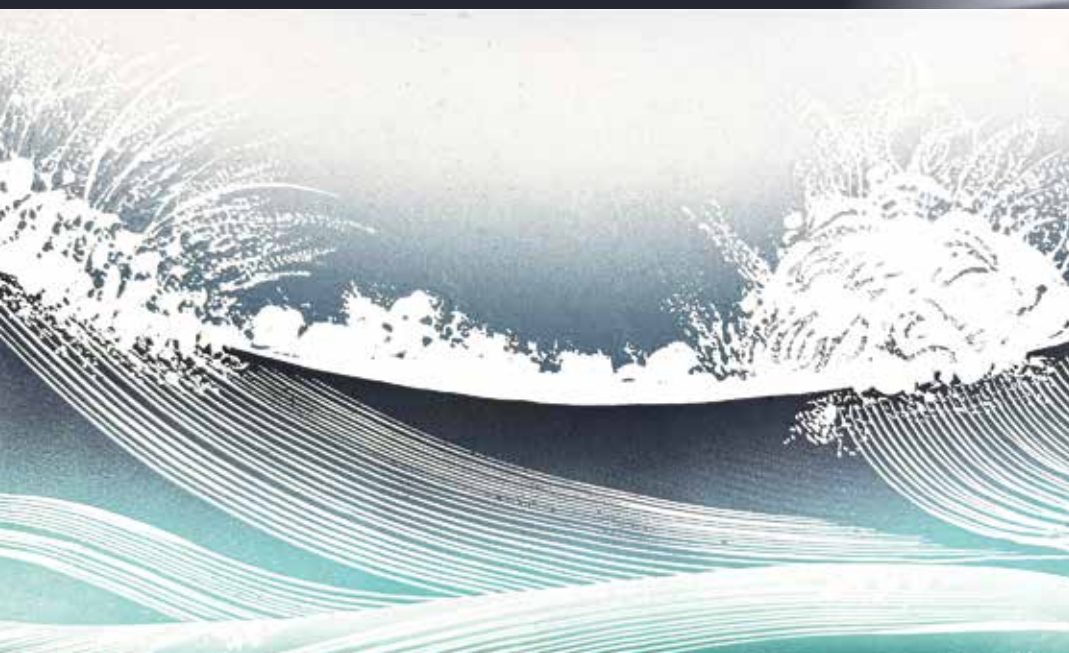
autumn | arts 
TRAIL
2025
OPEN STUDIOS

NAILSWORTH & BOX

Three Storeys is a multi-functional creative venue in the heart of Nailsworth, with makers' studios and a great café. It's the venue for the Trail's *Taster Exhibition*. A short distance away is Ruskin Mill and balcony café, Geoff Sumpter at the top of Spring Hill and the working studio of Rod Nelson in Box.



WWW.AUTUMNARTS.ORG



rod nelson | portrait photo: sarah turton



30 studio

"I am self-taught as an artist and printmaker and have been making woodcuts for many years. My early work was influenced by Shiko Munakata, a wonderful printmaker from Japan. Finding my own style hasn't been easy. Woodblock printing is very ancient yet contemporary at the same time. It sits on the boundary between art and craft. My present work is an appreciation of flowing lines, and the energy that seems to arise from flowing water. I am an elected associate of the Royal Society of Painter-Printmakers. My work has been shown in London, Bristol, New York, Shanghai, Kunming and in Germany."

Rod Nelson | woodblock
printmaker

**Old Lealand Cottage,
Box GL6 9HL**

07957 890447

ragnelson@btinternet.com

rodnelson.studio

[@rodnelsonwoodcuts](https://www.instagram.com/rodnelsonwoodcuts)

→ Drop down from Minchinhampton
Common from the Halfway Café.
The studio is on the right before the
Village Hall and car park. Access: ●



BOX



leonora + jo millak with nina



3 | exhibition

Sarah Turton | photographer

Three Storeys, Old Bristol Road, Nailsworth GL6 0JE

sarah@sarahturton.com

[@sarahturtonfoto](https://www.instagram.com/sarahturtonfoto) | sarahturton.com

Sarah has built a reputation as a successful photographer over many years where her creative skills and unique eye have been employed by clients ranging from those in advertising, magazine and newspaper publishing, trade unions, the education and health sectors. Her speciality is people; whether a formal studio portrait or on location, she has the ability to put people at ease and manages to capture both the character of an individual and the atmosphere of an event. She continues to shoot portraits and outdoor events including Gifford's Circus, Stow Horse Fair, protest marches and many aspects of British life (see sarahturton.com). Sarah returned to Gloucestershire after many years in London and now lives and works in the Stroud area.



→ Three Storeys is in the town centre. Access: ●



32 studio

Victoria Orr Ewing | painter

Three Storeys, Old Bristol Road, Nailsworth GL6 0JE
07741 195433

voe@me.com | victoriaorrewing.com | @victoria.oe

"I make paintings that evoke landscape, sometimes adhering to reality, or reducing forms into abstracted colour fields. My source material ranges from wild, empty places to the more personal view of my garden or the fields. I work directly from life and also from blurred photographs and film stills. I aim to paint the air around the land, circumstances where the atmosphere is made visible. My paintings are often devoid of detail; I am interested in places between places, edges, borders and far horizons. Freedom of the wilderness and protection of the home."



NAILSWORTH

→ Three Storeys is in the town centre. Access: ●



33 studio

Vanessa Wilson | artist

Three Storeys, Old Bristol Road, Nailsworth GL6 0JE

07872 360140

info@vanessawilsonpaintings.art

vanessawilsonpaintings.art

@vanessawilsonpaintings

“I was born in Karachi in 1969 and spent my early childhood in Australia before relocating to the UK in the late 1970s. I later lived in Andalusia, Spain for eleven years. These varied cultural experiences have had a profound influence on my work, shaping both its content and sensibility. My practice centres on painting and mixed media, using the creative process to connect with place, people and memory. Through paint and collage, I explore personal narratives – often forming embellished autobiographies told by an ‘unreliable narrator’, which invites viewers to engage and reflect on their own life stories.”



→ Three Storeys is in the town centre. Access: ●



dan austin in the forge, ruskin mill | photo: sarah turton

34 exhibition

Earth Fire Iron A Collaboration in Forged Metal

artists in iron

Friday 10 – Thursday 30 October
gallery + café open daily 10am – 4pm
Ruskin Mill Gallery, Old Bristol Road,
Nailsworth GL6 0LA
01453 837537

rmlt.org

Free admission

As part of the *Earth Fire Iron* series of associated events in and around Stroud, this exhibition showcases a collaboration between Forged Metal Arts postgraduate students led by Ren Garside and Bradley Wills from Hereford College of Arts and students from Ruskin Mill College. Together, they explore themes of nature through

➔ On the way out of Nailsworth on the A46 towards Bath, turn right on to Old Bristol Road, B4058 to Horsley and the recycling centre. Continue for 400 yards and after the houses there is a left turning into Brookdale, signposted Ruskin Mill Events Parking. Ruskin Mill Gallery and Café is just up the road on the same side. Disabled parking is in front of the mill building. Access: ●



NAILSWORTH



NAILS WORTH



the medium of forged metal, drawing inspiration from seeds and fungi.

The resulting exhibition highlights inventive works by both postgraduate artists and Ruskin Mill College students, celebrating creativity, craftsmanship and ecological awareness. Merging forged metal with environmental inspiration, it fosters a profound connection to nature, underscoring the transformative impact of collaboration.

This project is supported by Grow Wild, the national outreach programme of the Royal Botanic Gardens, Kew.



35 studio

Geoff Sumpter | artist

Vineyard View, 6 Norton Ridge, Nailsworth GL6 0TN
07990 513021

Roll up! Roll up!

After such a great response last year, Geoff's work is once again here to entertain, appealing to adults and children alike. Drawing on his seaside background, funfairs and maritime, his varied subject work in paintings and carvings is quirky, fascinating and humorous, sometimes amazingly small scale.

➔ From the roundabout in Nailsworth on the A46 turn up Spring Hill. At the second roundabout on Spring Hill, at the top by Forest Green Rovers football stadium, turn right. Follow the road down and take the first turning on the left which is Norton Ridge. Vineyard View is at the end of the cul-de-sac with plenty of parking. Lots of steps. Access: ●





autumn | arts 

TRAIL

2025

OPEN STUDIOS

PAGANHILL & STROUD NORTH

On the threshold of Stroud and Whiteshill, the Abolition Arch was built in 1834 by Henry Wyatt to commemorate the act of Parliament that finally abolished slavery. Just beyond it you'll discover the creative clusters that include painting, sculpture, printmaking, pottery and textiles.



WWW.AUTUMNARTS.ORG

photo: © al mccaffrey



PAGANHILL

exhibitors

Kathy Clare

Maggie Howe

Elizabeth Lee

Mandy Scott

36 exhibition

Paintprintclay

painting | sculpture | printmaking

2 Field Place, Paganhill, Stroud GL5 4BB

07738 493171

eliza.lee1359@gmail.com | @paintprintclay

“A substantial exhibition by the Collective *Paintprintclay* Maggie Howe, Elizabeth Lee and Mandy Scott with guest artist and friend, Kathy Clare (@kathyclare). With new work on show we continue to explore themes of change in ourselves, our home and work, and in our environment. Our setting is the gracious Grade 2 listed home, No. 2 Field Place, Paganhill – a unique and lovely venue that is worth a visit in its own right.”

- At the Mapole in Paganhill, turn left into Park End. The entrance to Field Place is directly opposite the Old Crown pub. Parking is free on the road outside. Please note there are a few steps and level changes. Access: ●

elizabeth lee



maggie howe



mandy scott



RANDWICK

37 studio

Jacq Garner | artist

**Old Cider House, Humphreys End,
Randwick, GL6 6EW**

07800 804847

jacq@jacqgarner.com | jacqgarner.com

[@jacqgarnerart](#)

“Pattern, texture and lustre in nature bring me endless fascination. My work employs acrylic paints and mediums to explore extraordinary structures and unusual colour arrangements, primarily in minerals, rocks and fossils. Much of my practice is experimental, which leads to complex and unusual surfaces and textures. Some pieces are representational, some use an object as a starting point before imagination takes over. I enjoy the creative decision making of my art, letting my paintings evolve rather than having a finished image in mind from the outset.”



→ From the Cainscross roundabout head towards Ebley, turn right onto Cashes Green Road. After almost a mile, take the first right after More Hall Park estate, onto Humphreys End. The Old Cider House is on the right by the Ruscombe Road junction. Access: ●





portrait photo: sarah turton



38 studio

John + Penny West Lansdown Pottery

potters

**The Studio, Hill Farm, Main Road,
Whiteshill GL6 6JS**

07443 390678

lansdownpottery@onetel.com

lansdownpottery.co.uk

[@johnwest9415](https://www.instagram.com/johnwest9415)

"The beauty of the Autumn Arts Trail is that it allows people to see what we make, where and how it is made and most importantly who we are. In many ways we put something of ourselves into each pot and it is this that the visitor connects with, just as much as the form, the glaze or the decoration of each piece. It is what separates out what is handmade and what has been produced by a machine."

- Drive through the village of Whiteshill. Well signposted at the crest of the hill. No. 63 bus from Stroud to Hill Farm. Access: ●



39 studio

Nadia Ryzhakova | artist

**The Painswick Centre,
Bisley Street, Painswick GL6 6QQ**

07803 521574

nadia@nadiaryzhakova.com

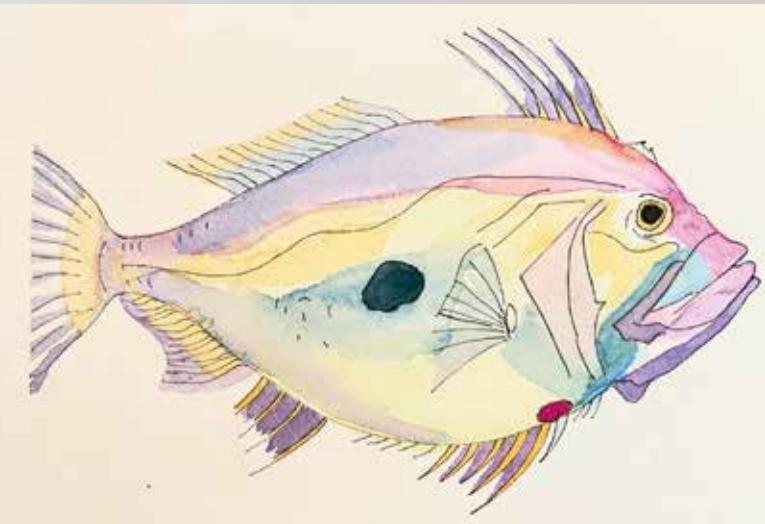
nadiaryzhakova.com | @nadia_ryzhakova



“I don’t need brushes to create. Paint and gravity are enough.” Nadia Ryzhakova works in the acrylic pouring technique – a method that allows paint to freely flow across the canvas, forming patterns of organic shapes echoing the natural world around us. Trees, clouds, water currents and the cosmos emerge from the surface as the artist finds harmony in the free-flowing chaos. Figures and landscapes merge and interact, weaving tales. Nadia often uses her own children as models through whom she revisits memories from her own childhood, allowing her to reconnect with her roots.

➔ In the village off the A46 from Stroud towards Cheltenham.
Access: ●





40 studio

Grant Barnett | printmaker artist

Cotswold Print House, Rose Cottage,

Vicarage Street, Painswick GL6 6XR

07941 544566

grantbarnett@yahoo.co.uk

@cotswold_print_House

Creating and printing lino cut, screenprint and collagraph pieces, alongside drawings and the occasional watercolour painting.

→ In the village off the A46 from Stroud towards Cheltenham.
Park on the street or in the car park. Access: ●



41 studio

Valerie Jordan | artist

Cockshoot Cottage, Sheepscombe GL6 7QY

01452 814441

valerie@valeriejordan.co.uk | valeriejordan.co.uk

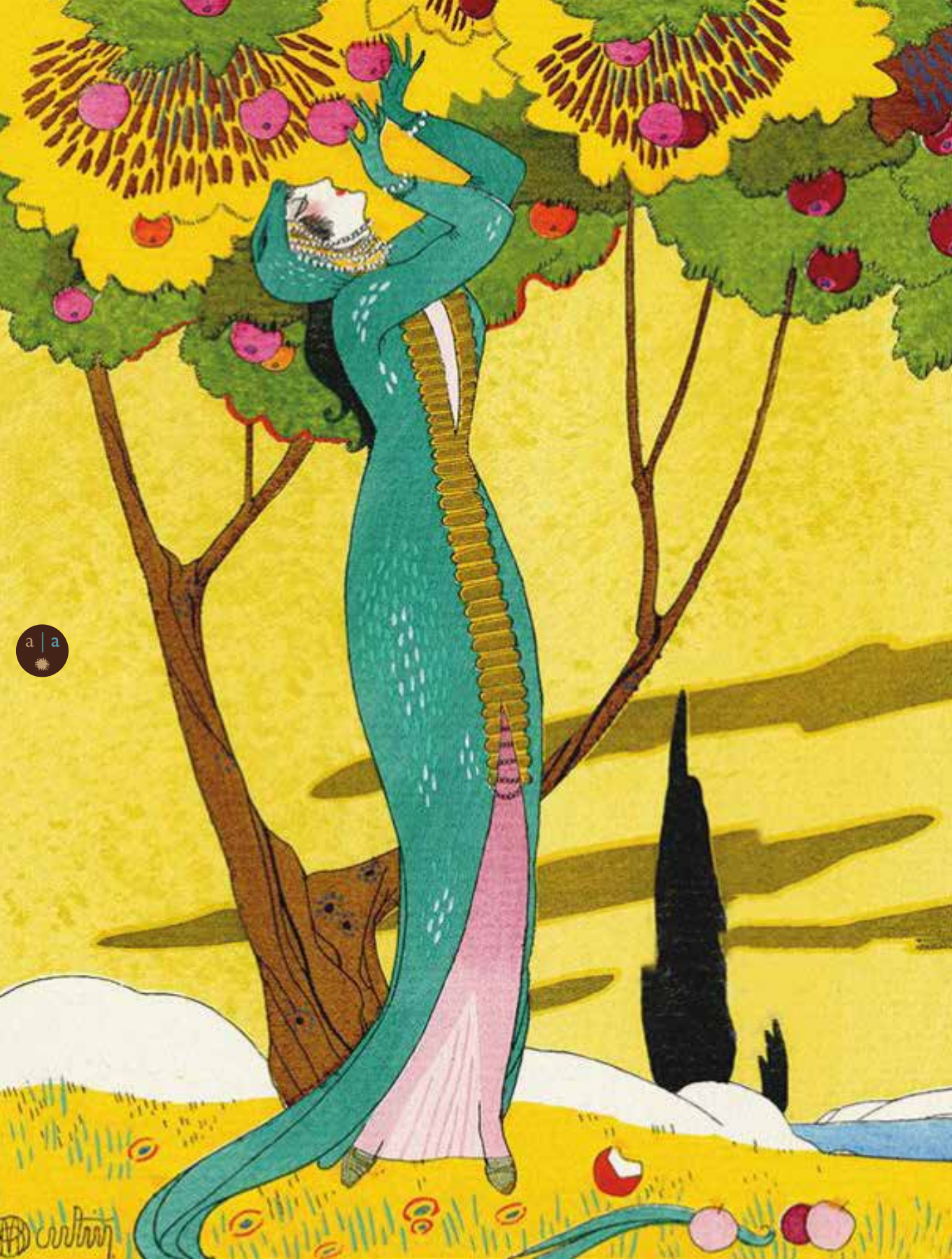
portrait photo: sarah turton

"My recent work has involved drawing, painting, printing and sewing in direct response to the landscape of Miami, where I lived and worked for a few years before returning to the Cotswolds. I layer, superimpose and repeat details from studies of shimmering water and marine life, fish, shells and flowers within structures that echo both Eastern carpet design and the formal grid of the city. I regard these 'landmarks' natural and man-made as equally transient."

- .From Stroud take the B4070 through Slad to Bulls Cross, then take the Sheepscombe turning, this road is called Longridge, but there are no road name signs. Take the right off this road just before Beech Lane, the *Autumn Arts Trail* sign indicates the turn off Longridge Road. There is a quarry pull-in above the cottage. Access: ●



SHEEPSCOMBE





&

+

EXHIBITIONS

open studio artists

October 2025



sarah turton + danny evans

trail artists

+ Sarah Turton

Trail Taster exhibition

Tuesday 14 October – Sunday 26 October

Tuesday – Friday 8.30am – 4pm

Saturday 10am – 3pm | Sunday 10am – 4pm

Three Storeys, Old Bristol Road, Nailsworth GL6 0JE

Free admission



sarah turton + chris beckett



A chance to see the breadth of Stroud's talent in Three Storeys' multi-functional venue in the heart of Nailsworth, Gloucestershire – a unique community for working together. With ten artist studios, a co-working space, gallery and café, it is a place for creatives to work, meet and have that all important coffee.

Three Storeys has it all when it comes to enjoying art. Come and see two of the resident artists' open studios and the *Autumn Arts* taster exhibition, all in one place. With the café in the mix too, it is a perfect spot to stop for a while as you enjoy the *Autumn Arts* weekends.

✳️ Sarah Turton will also be showing her portrait photographs of the *Trail* artists. See page 60.

➔ Three Storeys is in Nailsworth town centre.

✳️ For more information and café opening times:

threestoreys.co.uk

Access: ●





Earth Fire Iron Alan Evans and the New Iron Age, 1980-2025 exhibition

Saturday 6 September –
Sunday 2 November

Museum in the Park, Stroud GL5 4AF
Tuesday to Friday 10am – 4.30pm,
weekends 11am – 4.30pm

Free admission

Earth Fire Iron commemorates the career of Stroud artist-blacksmith Alan Evans (1952-2023) reflecting on his background as part of the Whiteway colony and the impact of Cotswold Arts and Crafts traditions.

✱ For more information see page 21.

01453 763394

museuminthepark.org.uk

Access: ●



Museum in the Park
Stroud District (Cotswold) Museum Service

Earth Fire Iron A Collaboration in Forged Metal exhibition

Friday 10 – Thursday 30 October
gallery + café open daily 10am – 4pm

**Ruskin Mill Gallery, Old Bristol Road,
Nailsworth GL6 0LA**

Free admission

Postgraduate students led by Ren Garside and Bradley Wills from Hereford College of Arts and students from Ruskin Mill College. Part of the Earth, Fire, Iron event at the Museum in the Park.

✱ For more information see page 63.

01453 837537

rmlt.org

Access: ●



EXHIBITIONS + DEMONSTRATIONS

open studio artists

October 2025

trail artists

Jane Foot

Jon Hastings

Jonathan Oakes



jane foot

trail artist

Deborah Cox



trail artists

GPC



The Bigger Picture exhibition

Saturday 11 – Friday
24 October (excluding
Sundays + Mondays)
10am – 4pm

The George Room,
The Sub Rooms,
George Street,
Stroud GL5 1AE

Free admission

Contemporary art exhibition
featuring artworks by
Jane Foot, Jon Hastings and
Jonathan Oakes

* For more information
see page 27
07740 950779
Access: ●

Deborah Cox exhibition

Friday 17 – Thursday
30 October
open daily 10am – 4pm
closed Tuesdays

Aleph Contemporary
Gallery, Station Road,
Stroud GL5 3AR

Free admission

Paintings and prints
by Deborah Cox

* For more information
see page 26
07740 950779
Access: ●

Gloucestershire Printmaking Cooperative exhibition + demos

Free admission

* See artists at work.
Etching, relief printmaking,
silkscreen printing,
letterpress, stone and
plate lithography.

* For more information
see page 44
01453 350885
Access: ●

**ALEPH
CONTEMPORARY**



trail artists

Daniel Evans

Jo Millak

Darren Rumley

daniel evans



photo: sarah turton

Burleigh Court

exhibition + demos

Friday 17 – Monday

27 October

**Burleigh Court Hotel,
The Roundabouts,
Brimscombe GL5 2PF**

Free admission

Contemporary sculpture
by Daniel Evans, Jo Millak
and Darren Rumley

✱ For more information
see page 54

01453 883804

**burleighcourtcotswolds.
co.uk** Access: ●

Saori

exhibition + demos

Saturday 18 October

– Sunday 26 October

**Weven, 21 George
Street, Stroud GL5 3DP**

A vibrant exhibition of
Saori weaving.

✱ Workshops and demonstrations
will be available. Visit the
Wayward Weaves website for
details, dates and booking.

✱ For more information
see pages 12 and 29

07815 712792

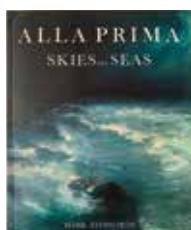
waywardweaves.co.uk
Access: ●



Wayward
Weaves



EXHIBITIONS + DEMOS



Alla Prima Skies and Seas with artist Mark Stopforth

book launch

Friday 24 October 6.30pm – 8pm

**Pegasus Art Studios, Griffin Mill,
London Road, Thrupp GL5 2AZ**

Admission £1

Mark is an artist specialising in oils and more specifically in a technique called Alla Prima. His work finds inspiration from the Romantic and the Sublime Art of the past but given a contemporary feel. Mark has exhibited work both in the UK and abroad. He is currently represented by The Paragon Gallery, Cheltenham and Galerie Rollin, Rouen. Mark is also a published author and poet.

✳ Booking: **01453 886560 | pegasusart.co.uk**
*Drinks and nibbles will be served in Studio One (first floor)
from 6:30pm. Presentation 7pm.*

➔ Griffin Mill is on the A419 Stroud to Cirencester road.
See page 43 for directions.

07954 212227

mark.stopforth@hotmail.com

markstopforth.co.uk | [@markstopforth](https://www.instagram.com/markstopforth)

Access: ●



BOOK LAUNCH

Serious Frivolities Judith Watt | fashion historian with Sarah Atkinson

illustrated talk

Wednesday 22 October

The George Room, The Sub Rooms,
George Street, Stroud GL5 1AE

Admission £10 (plus £1.50 online booking fee)

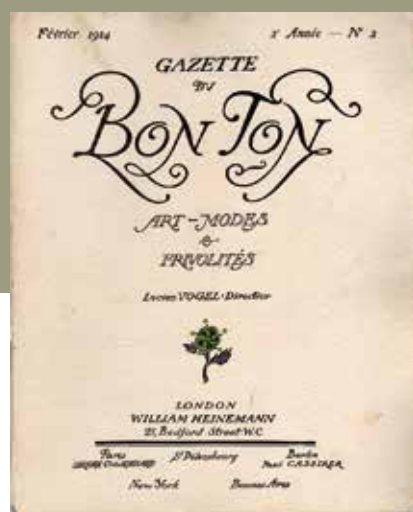
"In 1910," the legendary publisher, art director and editor-in-chief Lucien Vogel told journalist Georges Charensol, "there was no really artistic fashion magazine, nothing representative of the spirit of the time. My dream was therefore to make a luxury magazine with truly modern artists [*Gazette du Bon Ton*] ... to offer a women's magazine of a new type, artistic and representative of the times."

Judith Watt knows these words well. She is a fashion historian who has a wealth of knowledge about twentieth-century fashion, and she traces the line from the iconic fashion of Quant's sixties, Biba to punk in the seventies, the (not-so-) New Romantics of the eighties to the present day. What is design, couture, fashion? How do we record it and who are the caretakers of its history?

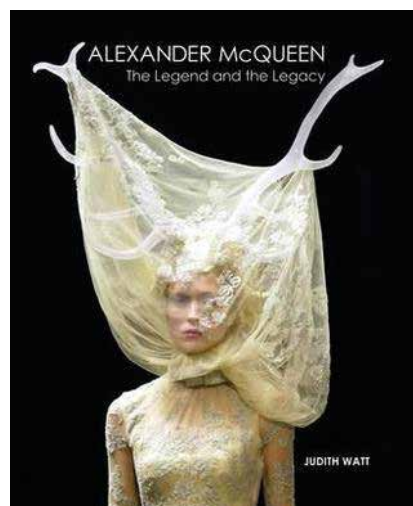
Who better to ask those questions than Sarah Atkinson, who worked on the recent exhibition, *The Biba Story, 1964-1975* at the Fashion and Textile Museum in London last year.

★ Booking: 01453 796880 | thesubrooms.co.uk

Access: ●



BIBA catalogue 1969







The Return | The Inner Circle The Guardians of The Groove + guests audio visual experience

Saturday 25 October 8pm – midnight

Star Anise Café, 1 Gloucester Street, Stroud GL5 1QG

Admission on the door £5 before 9pm, £7 after



A car rolls slowly down one of Stroud's dark, rainy backstreets and pulls up behind Star Anise Café. And into the night, record boxes in hand, step Mr. B & Mr. B, about to kick off the first ever *Inner Circle*. Little did we know the monster we had created. It ending up spanning three years, inviting DJs and Record Collections to join the Circle and play seven tracks of vinyl worthy of making it onto the night's Menu. Themes ran from Clothing to Menageries, mainly wandering the years between 1960 and 1980, leaning hard toward Funk and Soul. But this was all forgotten, lost in the sands of time until Mr. B & Mr. B decided to take a drive back down to Star Anise. So join *The Inner Circle* on Saturday 25 October, 8pm to midnight, and get your ears tuned to the choice cuts that make the grade with this month's guest (being the same guest as the one on that first dark night), Mr Kevin McGrath. Just come down and say Mr. B sent you.

- * For more information:
facebook.com/the.inner.circle.630232
- Star Anise Café is in Stroud town centre.
01453 840021 | staranisecafe.co.uk





CotswoldSculptorsAssociation

Creating Indoor Spaces 2025

Explore over 100 carefully curated sculptures



The Sanctuary Space

at Brimscombe Mill, Stroud GL5 2QN

11am-5pm. 18 - 26 Oct (closed Mondays)

Free artist demo day 25 Oct. (details on website)

www.cotswoldsculptorsassociation.com

a | a

AUTUMN ARTS TRAIL 2025



kerry phippen

andy bradley | photo: sarah turton



barron & larcher



Barron & Larcher textile designer-makers by Sarah Middleton

illustrated talk

Saturday 25 October 11am – noon

Studio One, Pegasus Art, Griffin Mill,
London Road, Thrupp GL5 2AZ

Sarah will be hosting a lecture about a fascinating couple. Phyllis Barron and Dorothy Larcher were pioneering textile designers at the forefront of a revival in hand-block printing in Britain. They moved to Painswick in the 1930s and built an impressive business selling to clients such as Coco Chanel and the Duke of Westminster. They were well known in the village, and walked around in their own designs – a unique design duo!

TALKS

- * For more information and booking:

sarah-middleton.co.uk

01453 886560 | pegasusart.co.uk

Access: ●

- * **Pegasus 10% discount***

Griffin Mill, Thrupp GL5 2AZ

shop open Monday – Saturday 9am – 5pm

Browse this wonderful shop and get 10% off art materials on both Saturdays*. *except on bespoke canvases

pegasusart.co.uk

Museum Art Gallery, Walled Garden + Shop

Museum in the Park,
Stroud GL5 4AF

opening times

open Tuesday to Friday

10am – 4.30pm,

open weekends & bank

holidays 11am – 4.30pm

Free admission

Soak up the autumn colours in the arboretum and walled garden. Explore the art and the artefacts in the museum.

- * For more information:

01453 763394

museuminthepark.org.uk

Access: ●





Autumn Arts is a not-for-profit arts organisation supporting visual and applied arts, based in Stroud, Gloucestershire. With an annual *Autumn Arts Trail* in October, Autumn Arts nurtures the cultural landscape of Stroud and the area. To join the Autumn Arts mailing list and support our work go to: www.autumnarts.org

* Autumn Arts

07975 540053

info@autumnarts.org | [@autumnarts25](https://www.instagram.com/autumnarts25)
autumnarts.org

Co-ordinator + Editor **Sue Smee**

Design Art Director **Chris J Bailey** ©2025

Guest Portrait Photographer **Sarah Turton** ©2025

Website **Jason Warland**

Print **Tewkesbury Printing**



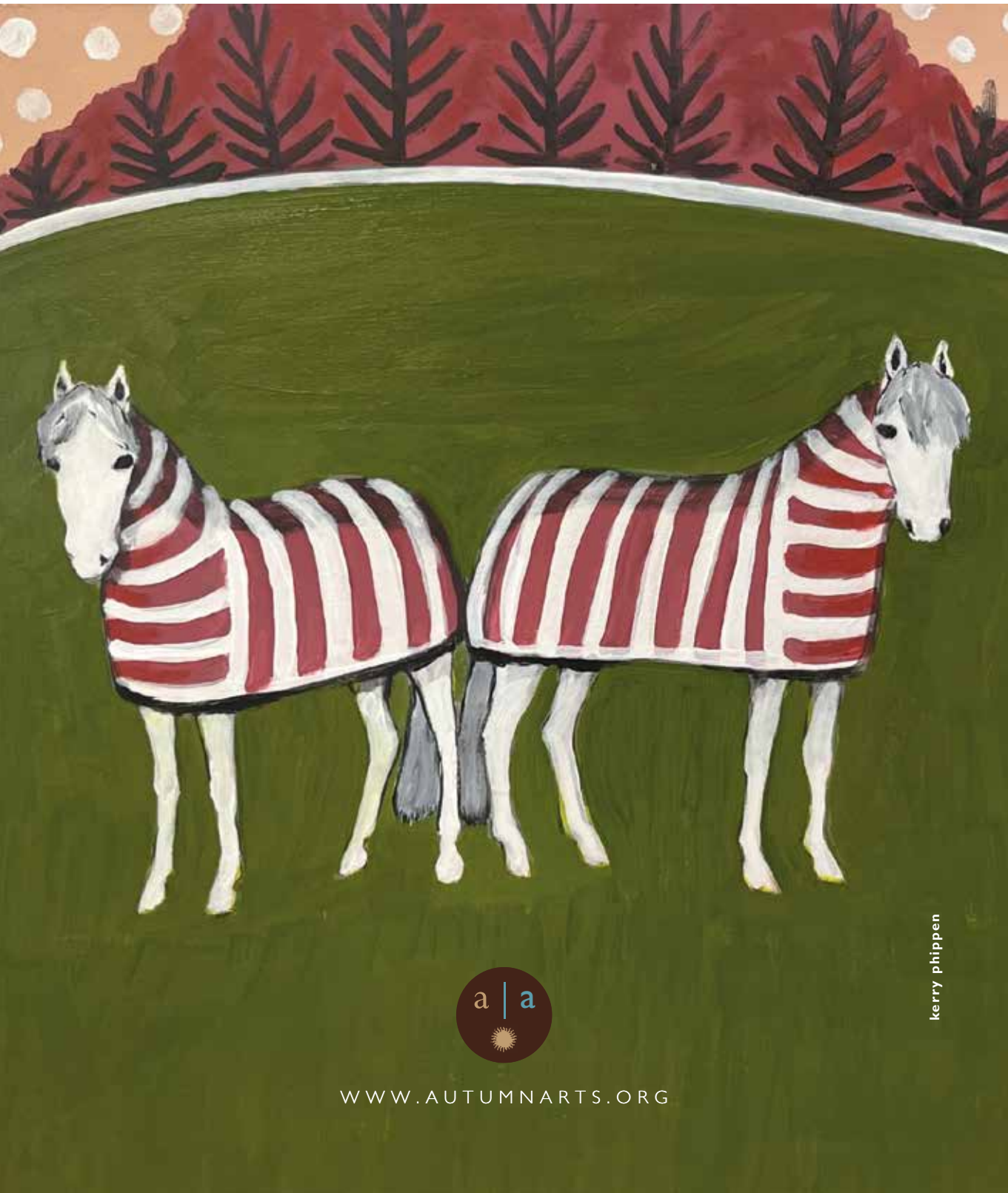


frances clark-stone



WWW.AUTUMNARTS.ORG

autumn | arts 
TRAIL
2025



kerry phippen

WWW.AUTUMNARTS.ORG