

autumn | arts 

# TRAIL

OCTOBER 2024



[WWW.AUTUMNARTS.ORG](http://WWW.AUTUMNARTS.ORG)

stroud & the five valleys, gloucestershire

open studio weekends **12-13+19-20 OCTOBER**

information

autumn | arts   
**TRAIL**

**OCTOBER 2024**

*“Always my favourite weekends of the year!  
I love everyone seeing what an extraordinary level of talent and  
craftsmanship we have in the Stroud area.  
Also artists and makers are across the generations, which I love.”*

**Lulu Guinness**  
*Patron of Autumn Arts*

**OPEN STUDIOS**

**Saturday 12 – Sunday 13 October 11am – 6pm**  
**Saturday 19 – Sunday 20 October 11am – 6pm**

**EVENTS**

**Wednesday 9 October – Sunday 3 November**

*some artists and venues may have special opening times*



Sue Smee **co-ordinator + editor** | Chris J Bailey **design art director**

[WWW.AUTUMNARTS.ORG](http://WWW.AUTUMNARTS.ORG)



nadia ryzhakova

## welcome

Welcome to *Autumn Arts 2024*. Building on the success of last year, we have a total of over 50 artists and makers on the *Trail*, both in their studios and in exhibitions around the Five Valleys. More than last time, but still keeping it small.

The name tells the story and the work reflects the place. We have artists and makers whose support we greatly value; this Stroud community of creatives is special and welcoming and there's always room for more.

The *Autumn Arts Trail* is a window into each artist's practice; it's enticing, inspiring and impressive. Stroud and its valleys are blessed with an exceptional mix of talent and skill, a magnet for those who make and those who appreciate.

**Sue Smee**

*Co-ordinator & Editor*

## things to know

The *Trail* has been laid out geographically to make it easier to cover the ground, with neighbouring artists grouped together, mostly within walking distance of each other. Take note of the fantastic outliers – you could start at the periphery and plan your route back to the centre, and take advantage of the cafés along the way.

### Stroud

The train and bus station are in the town centre and there are many bicycle parking rails. There are several car parks in the town centre and free parking is available in the streets away from the shopping areas.

### Foot and pedal

Several venues are also accessible from the old railway footpath and cycle track, and the canal towpath.

### Painswick

Parking is available in the centre of this beautiful Cotswold village. Stamage's Lane car park is right next to the church and its famous yew trees.

### Access

All venues and studios have an accessibility code for pushchair and wheelchair users. If you have further access needs please check with the venue before visiting.

#### Access key:

- **Good**  
Wheelchair access to all parts of the venue
- **Partial**  
Wheelchair access to limited areas of venue, including uneven surfaces, narrow access
- **Not good**  
No wheelchair access, including steps

### Liability

The organisers and venues do not accept liability for any damage, injury or loss sustained by any member of the public or to their property whilst visiting any of the open studios, events or exhibitions.

*some artists and venues may have special opening times*







information



look for the special signs near the venues  
+ for access code see page 02

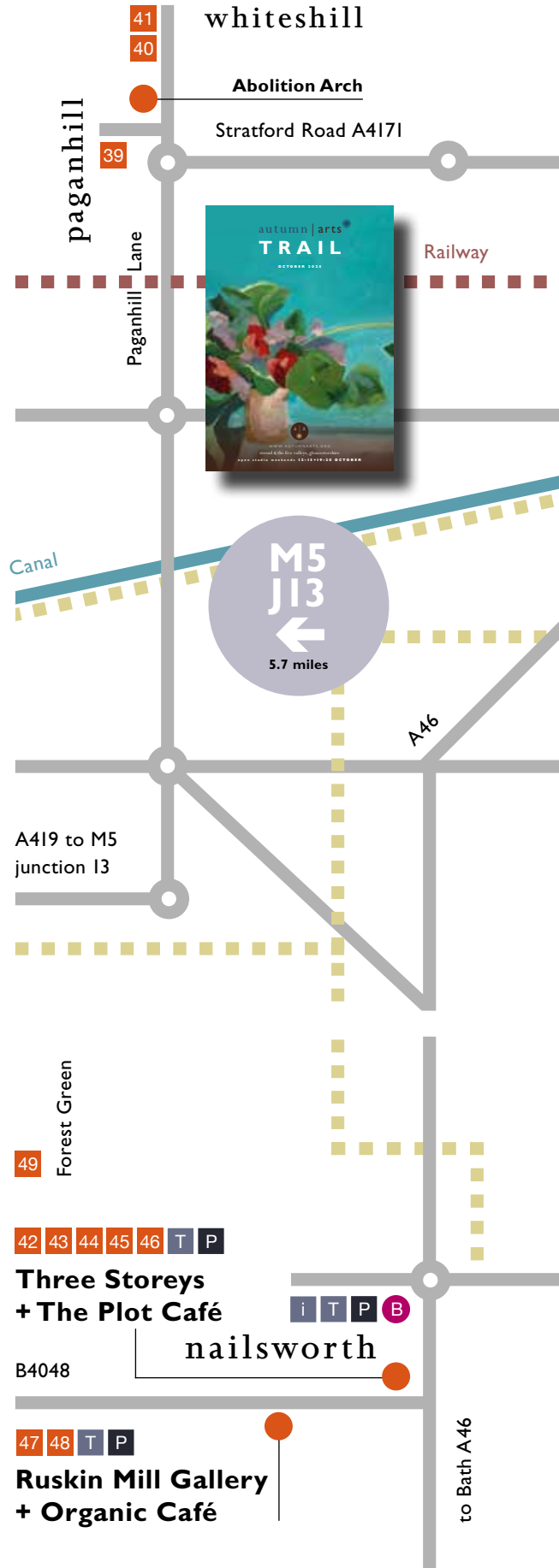
TRAIL ARTISTS

	page		page
1 Deborah Cox	14	26 M Coppes-Martin	43
2 Annie Hutchinson	16	27 Katerina Gibb	44
3 M Warren-Smith	17	28 Emily Johnson	46
4 Christina Bingle	18	29 Lizzie Mabley	47
5 Fionna Hesketh	19	30 Sadie Rowlands	48
6 Jessie James	20	31 Jane Garbett	50
7 Kim Jarvis	21	32 Sue Cridland	52
8 Henrietta Park	22	33 Linda Davies	53
9 Claire Stratton	23	34 Ange Mullen-Bryan	54
10 Darren Rumley	24	35 Aly Lloyd	55
11 Chris Beckett	26	36 Howard Mason	56
12 Penny Campbell	27	37 Sarah Middleton	57
13 Jo Millak	28	38 Nadia Ryzhakova	58
14 Juli Bharucha	30	39 Change <sup>3</sup>	61
15 Hazel Cudmore	31	40 Sabine Kaner	62
16 Paul Fowler	32	41 John + Penny West	63
17 Max Hale	33	42 Clare Bassett	66
18 Carol Honess	34	43 E Leyfield-Valerian	67
19 Daisy Murdoch	35	44 Hannah Linfoot	68
20 GPC	36	45 Jan Petrie	69
21 Susie Harding	37	46 Vanessa Wilson	70
22 Kerry Phippen	38	47 Charlie Ash	71
23 Wendy Rhodes	39	48 Isobel Harper	72
24 Susanna Birley	41	49 Geoff Sumpter	73
25 Bill Rickinson	42	50 Rod Nelson	74

\* EVENTS 75



WWW.AUTUMNARTS.ORG





STROUD

to Bisley



**KEY**

- A Railway Station
- B Bus Station
- ⋯ Footpath
- ⋯ Footpath & cycle track
- ⋯ Railway
- Canal
- Pedestrianised area
- i Tourist Information
- i Canal Visitor Centre
- T Toilets
- P Parking

↑  
N

*map not to scale*

**Access**  
See code on page 02

map: © chris j bailey 2024

AUTUMN ARTS TRAIL 2024

painswick

i T P 31 32 33 34 35 36 37 38

Museum in the Park

to Gloucester A4173  
to Painswick A46

The Yard

Slad Road B4070

Cainscross Road

Aleph

High Street

Nelson Street

A419

Rodborough Hill

The Sub Rooms

Shed Poets Society mini gallery

4 5 6 Piccadilly Mill

14 15 16 17  
18 19 20 21  
22 23 T P

Griffin Mill  
Pegasus Arts

Minchinhampton + Rodborough Commons

London Road A419

Studio 18

brimscombe

50  
box

26 27 28 29 30 T

Victoria Works Studios

Railway

A419 to M4  
junction 15

High Street

chalford

24 25





bill rickinson



autumn | arts 

# TRAIL

OCTOBER 2024

# OPEN STUDIOS



[WWW.AUTUMNARTS.ORG](http://WWW.AUTUMNARTS.ORG)

# AUTUMN ARTS TRAIL 2024 OPEN STUDIOS

geoff sumpter



With two new galleries in the middle of town, the *Autumn Arts Trail 2024* highlights the artistic diversity of the Stroud area and the enticing spaces that hold the rewards.

From the centre of contemporary Stroud to listed Gothic, to medieval cottages on hillsides, the *Trail* will take you on a journey of the discreet to the dramatic.

On the Whiteshill route, don't miss **2 Field Place**, a new and historic occasional arts venue. In town, there are two new galleries. Close to the station, the pristine **Aleph Contemporary Gallery** shows international and local art; a short walk takes you to **The Yard Gallery** in a rustic setting close to



the shed poets society mini gallery





# COUNTERPOINT

St Laurence Parish Church, next to a great cafe for your refreshment. Bridging the gap between the town open studios and the Rodborough artists, discover **The Shed Poets Society** mini gallery tucked in amongst the ivy by the railway and canal.

Along the canal towpath, past Stroud Brewery and on the way to The Long Table - both famously hospitable community ventures - is **Studio 18**. It's a vast and wild industrial unit which lends itself to seriously large-scale art.

By contrast to the ordered world of galleries, the multi-talented **Geoff Sumpter's** prolific output is an opportunity to venture to the very edge of Nailsworth - the view! It's another world of painting, saucy seaside artefacts, meticulous modelling and sculpture.

Expand your experience...



studio 18

## locations

**2 Field Place** page 61

**Aleph Contemporary**  
pages 14, 72

**The Yard Gallery** page 16

**The Shed Poets Society**  
page 08

**Studio 18** page 77

**Geoff Sumpter** page 73



## AUTUMN ARTS TRAIL 2024

# OPEN STUDIOS

### trail artists

Charlie Ash	Susie Harding	Daisy Murdoch
Clare Bassett	Isobel Harper	Rod Nelson
Chris Beckett	Fionna Hesketh	Henrietta Park
Juli Bharucha	Carol Honess	Jan Petrie
Christina Bingle	Annie Hutchinson	Kerry Phippen
Susanna Birley	Jessie James	Wendy Rhodes
Penny Campbell	Kim Jarvis	Bill Rickinson
Hazel Cudmore	Emily Johnson	Sadie Rowlands
Mandy Coppes-Martin	Sabine Kaner	Darren Rumley
Deborah Cox	Emma Leyfield-Valerian	Nadia Ryzhakova
Sue Cridland	Hannah Linfoot	Claire Stratton
Linda Davies	Aly Lloyd	Geoff Sumpter
Paul Fowler	Lizzie Mabley	Melvyn Warren-Smith
Jane Garbett	Howard Mason	John + Penny West
Katerina Gibb	Sarah Middleton	Vanessa Wilson
GPC	Jo Millak	
Max Hale	Ange Mullen-Bryan	

# T A S T E R E X H I B I T I O N

Tuesday 8 – Sunday 20 October

A selection of work from participating artists

Tuesday – Friday 8.30am – 4pm | Saturday – Sunday 11am – 6pm | *Free admission*

### Three Storeys

Old Bristol Road, Nailsworth GL6 0JE

[threestoreys.co.uk](http://threestoreys.co.uk) | *see page 76 for more details*

- Three Storeys is next to the free car park adjacent to Nailsworth Town Hall, or from the town centre, a two-minute walk up Butcher Hill's Lane. Nailsworth can also be reached by the old railway cycle track and footpath from Stroud. Ground floor café, gallery and toilets are fully accessible with steps to first floor studios. Access: ●





[WWW.AUTUMNARTS.ORG](http://WWW.AUTUMNARTS.ORG)

autumn | arts 

# TRAIL

2024

## STROUD TOWN

At the meeting place of five beautiful Cotswold valleys and a lively, award-winning farmers market, you will find artists and makers within an easy stroll. Enjoy the creative atmosphere of the cafés and eateries along the way.

→ The venues in this section are at walkable locations from the town centre.

darren rumley



WWW.AUTUMNARTS.ORG









## Exhibition

### Deborah Cox

artist

**Aleph**

**Contemporary Gallery,**

**Imperial House,**

**Station Road,**

**Stroud GL5 3AR**

**07740 950779**

[deborahcoxart@hotmail.com](mailto:deborahcoxart@hotmail.com)

[deborahcoxgallery.co.uk](http://deborahcoxgallery.co.uk)

[@deborahcoxgallery](https://www.instagram.com/deborahcoxgallery)

Deborah Cox's work responds to place and landscape.

As a printmaker/painter she has repurposed etchings and mono prints, collaging images of Bourne Mill and Stroud Canal. She is interested in the non-visible in the landscape, particularly Stroud's colonial history, but also social and political implications within the landscape. As a writer she also explores the non-visible in the Gloucestershire landscape, including her childhood in Chalford.

See page 78 for additional opening times.

→ Adjacent to Stroud railway station main entrance. Access: ●

## AUTUMN ARTS TRAIL STROUD

open studio weekends 12-13+19-20 October

**AUTUMN ARTS TRAIL STROUD**  
open studio weekends 12-13+19-20 October



## 2 exhibition

**Annie Hutchinson**

mixed media artist

**The Yard Gallery**

**Withey's Yard, 55 High Street, Stroud GL5 1AS**

07792 695623

[nettie.littlewren@gmail.com](mailto:nettie.littlewren@gmail.com)

[littlewrenhousefactory.co.uk](http://littlewrenhousefactory.co.uk)

littlewrenhouse

"I love experimenting with a variety of recycled materials. Textiles and papier-mâché have been a particular interest in post-pandemic years. Hand and machine-stitched wall pieces and three-dimensional papier-mâché sculptures show an exploration of folkloric and mythical themes relevant to my working practice as I try to navigate personal and global issues."

→ The Yard Gallery is a great new venue in the centre of Stroud, easily accessible to all and next to the wonderful Yard Café. See page 78 for more details. Access: ●







### 3 studio

#### **Melvyn Warren-Smith**

artist

**20 Nelson Street, Stroud GL5 2HN**

**07801 731962**

[melvyn@melvyn-warren-smith.com](mailto:melvyn@melvyn-warren-smith.com)

[@melvyn.warrensmith](https://www.instagram.com/melvyn.warrensmith)

Melvyn's work is figurative. The subjects are eclectic; landscapes and portraiture are in oil on canvas.

For many years he worked as a highly sought-after illustrator specialising in book covers. Stroud and the landscape consisting of the river, the canal and commons really inspire his work.

- Top of the High Street in Stroud, over the zebra crossing, up Nelson Street halfway up on the right. There is a car park opposite the studio. Access: ●



AUTUMN ARTS TRAIL STROUD  
open studio weekends 12-13+19-20 October



**AUTUMN ARTS TRAIL** **STROUD**  
open studio weekends 12-13+19-20 October

#### 4 studio

**Christina Bingle**

painter

**Golden Seed Hub,  
top floor, Piccadilly Mill  
West, Lower Street,**

**Stroud GL5 2HT**

**07976 899517**

**chris@subtlecolours.com**

**subtlecolours.com**

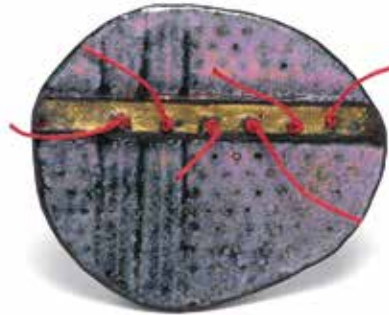
**@subtlecolour**



“I love the texture and alchemy of oil paint. I have a degree in Fine Art, but I have always been an artist. I paint landscapes en plain air, and still life in the studio. I enjoy the challenge of mixing colours and working with a limited colour palette. I also work-part time at Pegasus Art advising customers and making canvases for artists. I have lived in Stroud for 27 years; I love the creative energy of the place.”

- Go up the alley on Lower Street beside The Lindens kindergarten. At the top of the slope, go up steep black metal stairs outside left hand building, through door. Follow signs to the top floor. Park on Bowbridge Lane by Stroud hospital. Access: ●





## 5 studio

### Fionna Hesketh

jeweller

19a Lower Street, Stroud GL5 2HT

07817 111160

[info@fionnahesketh.co.uk](mailto:info@fionnahesketh.co.uk)

[fionnahesketh.co.uk](http://fionnahesketh.co.uk)

[@fionnaheskethjeweller](https://www.instagram.com/fionnaheskethjeweller)

Fionna makes unique, one-off contemporary jewellery. Her aim is to inject individuality into each piece of jewellery that she creates, enjoying and celebrating the process and the materials involved. Fionna has developed a very personal style of working with a variety of metals and materials including vitreous enamel, and recycled precious metals.

→ Off Lower Street, in the Piccadilly Mill courtyard, on the right. Access: ●



**AUTUMN ARTS TRAIL STROUD**  
open studio weekends 12-13+19-20 October



## 6 studio

### Jessie James

artist

**Studio Tuft, Piccadilly Mill, Lower Street,  
Stroud GL5 2HT**

**07929 673747**

**studio.tuft@gmail.com**

“I make hand-tufted rugs that brighten up your home; each rug is a functional piece of art work for the floor. I use a tufting gun and sustainably sourced rug wool, so they are made for walking on. Making rugs is a very intuitive process for me, colour and shape are the starting point for my designs. I then draw on my surroundings and experiences as inspirations to create these striking rugs. My favourite part about the rugs is the thick sumptuous pile.”

→ Off Lower Street. Access: ●

open studio weekends 12-13+19-20 October  
**AUTUMN ARTS TRAIL STROUD**



## 7 studio

### **Kim Jarvis**

artist

**2 Bowbridge Lane, Stroud GL5 2JS**

**01453 757474**

Kim is a landscape painter working in oils. Her love of the British coast draws her to wild places, in particular Scotland's west coast and islands. Her en plein air studies are very collectable and her larger paintings have been exhibited often at London's Mall Galleries and the Royal West of England Academy in Bristol. Kim will be exhibiting new work which will also include studies of local landscapes.

→ At the top of Bowbridge Lane by the hospital. From Stroud town, the first house on the right after the hospital car park, through the big gates. Access: ●





## 8 studio

### Henrietta Park

textile designer

1 Upper Dorrington Terrace, Stroud GL5 2JE

07932 780979

hello@henriettapark.co.uk

henriettapark.co.uk

@henrietta.park

Henrietta is a knitwear designer who knits and felts lambswool to create a unique, stylish yet practical range of clothes and accessories. She uses British spun lambswool in unusual colour combinations with a minimal but strategic use of pattern.



Access to studio on Park Road. Head towards the hospital up Field Road then turn right on to Park Road. The studio is second entrance on the right. Access: ●







**AUTUMN ARTS TRAIL STROUD**  
open studio weekends 12-13+19-20 October

**9 guest**

**Claire Stratton**  
jeweller

**1 Upper Dorrington Terrace, Stroud GL5 2JE**

**07966 440998**

**info@clairestratton.co.uk**

**clairestratton.co.uk**

**@stratton\_claire**

“So, one might ask, why make jewellery? In these times, in this world, where bodily decoration could seem so frivolous? But here I still am, held by the lure of metal and rock... our underworld anchors. In search of mineral companions, allegiances are made, recognition and kinship... ‘I know you’, and perhaps, ‘We belong together’, reminding us, maybe, what it is to be human. Fanciful maybe, but so it is.”

→ Access to studio on Park Road. Head towards the hospital up Field Road then turn right on to Park Road. The studio is second entrance on the right. Access: ●



## 10 studio

### **Darren Rumley**

sculptor

**Unit 1, Wallbridge Industrial Estate, Wallbridge,  
Stroud GL5 3JU**

**07773 411969**

**info@oneartisan.co.uk**

**oneartisan.co.uk**

**@onerumley**

“I have a love of great design and art that crosses over to my work. I create mainly functional sculpture in concrete, wood and resin for the home, garden and public spaces.”

→ Turn in by KwikFit and keep right. Go behind building to the end of the lane. Access: ●



autumn | arts 

# TRAIL

2024

OPEN STUDIOS

## RODBOROUGH

An easy start to the *Trail*, the Rodborough artists offer you a variety of media.

The Old Farmhouse garden is a beautiful setting for glass sculpture, in addition to the studio. And nearby in Queen's Road you'll find functional domestic ceramics and lively metal sculpture.



jo millak

WWW.AUTUMNARTS.ORG





## AUTUMN ARTS TRAIL RODBOROUGH

open studio weekends 12-13+19-20 October

### II studio

#### Chris Beckett

glass artist

The Old Farmhouse, Rodborough

Lane, Rodborough GL5 2LH

t: 07918 507857

e: [chrisb-noodle@hotmail.com](mailto:chrisb-noodle@hotmail.com)

i: [@chrisbfusedglass](https://www.instagram.com/chrisbfusedglass)

w: [chrisbfusedglass.com](http://chrisbfusedglass.com)

Chris makes light-capturing glass sculptures, inspired by nature's transformations, ancient cultural symbols and timeless universal wisdom. She uses a combination of experimental techniques, responding intuitively to each piece after it's been fired.

- From Stroud, take the A46 towards Nailsworth. Turn left up Rodborough Hill to the Prince Albert pub. Turn left into Butterow West and follow the signs into and along Rodborough Lane. The Old Farmhouse is towards the end, above a high stone wall with wooden trellis. Parking for three cars. Access via some shallow steps. Access: ●





## 12 studio

### **Penny Campbell**

potter

**Lower Cheyne, Queens Road, Rodborough GL5 3SN**

07817 437561

[pencam30@gmail.com](mailto:pencam30@gmail.com)

[pennycampbellpottery.co.uk](http://pennycampbellpottery.co.uk)

[@pennycampbellpottery](https://www.instagram.com/pennycampbellpottery)

Penny takes inspiration from traditional British pottery to create well-crafted and beautiful forms. She throws pots which are both functional and affordable, and intended to make an occasion out of daily rituals. While most of Penny's work is fired in an electric kiln, more recently she has been wood-firing some of her work, using soda to create glazes with extra depth and beauty.

→ From Stroud, head up Rodborough Hill and take the third left, before the Prince Albert. Lower Cheyne is the wooden clad house on your right. Access: ●





**AUTUMN ARTS TRAIL RODBOROUGH**  
open studio weekends 12-13+19-20 October

### 13 guest

**Jo Millak**  
sculptor

07485 164193

[josemillak@gmail.com](mailto:josemillak@gmail.com)

[@jomillak](https://www.instagram.com/jomillak)

Jo Millak is a self-taught sculptor, whose art reflects his obsession with wildlife. He invites viewers to consider the interconnectedness of all living beings, whilst at the same time exploring the existential tension he perceives between humans and animals. Jo does this through the use of a symbolism formulated in childhood and by utilising recycled materials and found objects, demonstrating the hidden beauty that lies in the discarded. Based in Longford, he is heavily inspired by Gloucestershire's history and native fauna and regularly exhibits around the Cotswolds.

→ From Stroud, head up Rodborough Hill, turn left just before the Prince Albert pub. Wooden clad house on the right. Parking on drive and road. Access: ●

autumn | arts 

# TRAIL

2024

OPEN STUDIOS

## GRIFFIN MILL

Griffin Mill is a handsome, three-storey, 17th-century red brick mill building that has seen many changes over its lifetime, now fittingly occupied by Pegasus Art and artists whose creative presence adds a working energy to the walls.

## Griffin Mill

London Road, Thrupp GL5 2AZ

→ Griffin Mill Trading Estate is on the right on the A419 towards Cirencester. The mill is on the left, Pegasus Art Studios are up the metal stairs. Plenty of free parking in front of Pegasus and in the large car park to the left behind Bailey Paints. Access: ●



juli bharucha



WWW.AUTUMNARTS.ORG



## I4 studio

**Juli Bharucha**  
ceramicist

**Unit 16 ground floor, Griffin Mill, London Road,  
Thrupp GL5 2AZ  
07963 112767**

[julibharuchaceramics@btinternet.com](mailto:julibharuchaceramics@btinternet.com)

[julibharuchaceramics.co.uk](http://julibharuchaceramics.co.uk)

[@julibharuchaceramics](https://www.instagram.com/julibharuchaceramics)

*"Porcelain Golds* springboard from my larger sculptural works extracting the core elements of fragility and intricacy; they are a mediation sidestepping spoken and written language. Each sculpture is individually created from porcelain using a variety of hand building methods, the surfaces carefully sculpted with repeat forms to elude the eye and finished with gold lustre. Complex and multifarious, these pieces have a sense of intimacy reminiscent of jewels, a keepsake and precious connection to the heart."

- Griffin Mill is on the A419 Stroud to Cirencester road. The studio is underneath Pegasus Art. For full directions see page 29. Access: ●





## AUTUMN ARTS TRAIL THRUPP

open studio weekends 12-13+19-20 October

### 15 studio

#### Hazel Cudmore

artist

**Attic Studio 3, Pegasus Art, Griffin Mill, London Road, Thrupp GL5 2AZ**

07929 285288

[hazel.cudmore@btinternet.com](mailto:hazel.cudmore@btinternet.com)

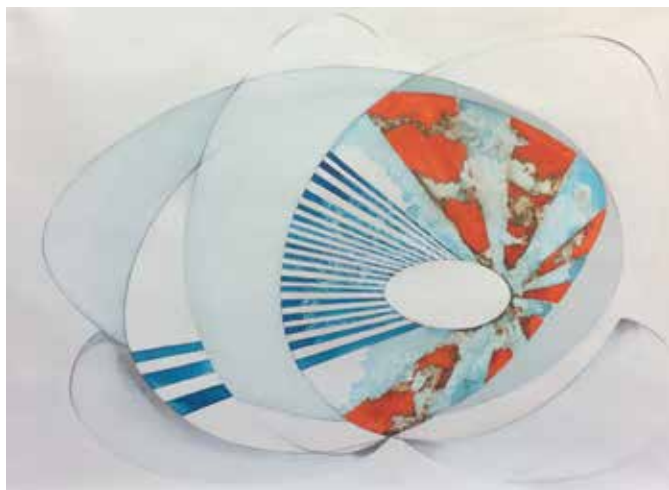
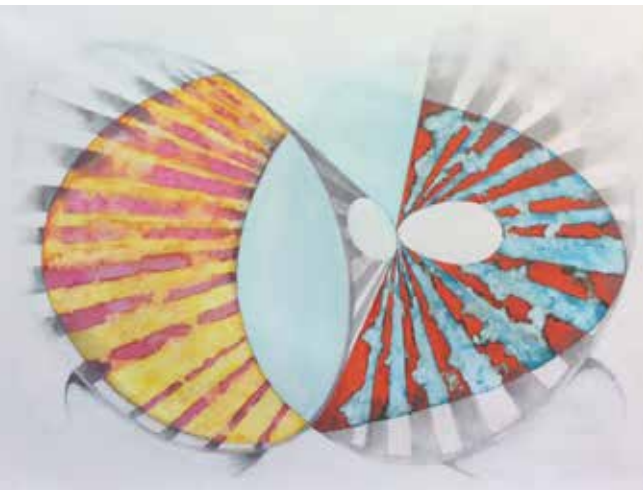
[hazel-cudmore-art.uk](http://hazel-cudmore-art.uk)

“As a figurative artist, I find inspiration in the everyday. I make paintings in acrylic, oils and watercolour from photo or sketch references, or from what I see in front of me.”

- Griffin Mill is on the A419 Stroud to Cirencester road. The studio is on the top floor of Pegasus Art. For full directions see page 29. Access: ●







## AUTUMN ARTS TRAIL THRUPP

open studio weekends 12-13+19-20 October

### 16 studio

#### Paul Fowler

artist

**Studio 9, Pegasus Art,  
Griffin Mill, London Road,  
Thrupp GL5 2AZ**

07910 332245

fowlerlayfigures@gmail.com

paulfowlerstudio.co.uk

@fowlerlayfigures

“This latest series of paintings explores the unity of a musician’s and a painter’s language. Responding to the musician’s movement of sound through space, we connect to the rhythm within us all. Mirroring this within a painter’s language creates the colour movement and the joy. My paintings aim to hold that moment of fusion.”

- Griffin Mill is on the A419 Stroud to Cirencester road.  
Studio 9 is on the first floor of Pegasus Art.  
For directions see page 29. Access: ●





## 17 studio

### Max Hale

artist

**Studio 1v, Pegasus Art, Griffin Mill, Thrupp GL5 2AZ**

07792 015059

[maxhaleart@gmail.com](mailto:maxhaleart@gmail.com)

[maxhaleart.co.uk](http://maxhaleart.co.uk)

[@MaxHaleArt](https://www.instagram.com/MaxHaleArt)

“Taking inspiration to drive my desire to create light-filled paintings, I embrace most subjects using an eclectic mix of magic and mediums and creating every amount of ideas to give multi-faceted work. This attitude to progress and development is central to my life and is transferred to my tutoring where my inspiration, love and drive is shown and passed to my students.”



- Griffin Mill is on the A419 Stroud to Cirencester road.  
For full directions see page 29. Access: ●



## AUTUMN ARTS TRAIL THRUPP

open studio weekends 12-13+19-20 October



## 18 studio

### Carol Honess

artist

**Studio 5, Pegasus Art Studios, Griffin Mill,  
London Road, Thrupp GL5 2AZ**

07917 818500

[carolhoness@gmail.com](mailto:carolhoness@gmail.com)

[fern\\_cottage\\_studio](#)

Carol is an artist and printmaker taking inspiration from the natural world. Detailed ink drawings are hand printed by the artist to create cards and print editions, some hand painted with watercolours. Seedheads, leaves and ferns are printed onto clay, paper or fabric to make unique prints, tiles and textile pieces.

→ Griffin Mill is on the A419 Stroud to Cirencester road.  
For full directions see page 29. Access: ●





open studio weekends 12-13+19-20 October  
**AUTUMN ARTS TRAIL THRUPP**

## 19 studio

### Daisy Murdoch

artist

**Pegasus Art Studios, Griffin Mill,**

**London Road, Thrupp GL5 2AZ**

07970 238410

[daisy\\_murdoch@yahoo.co.uk](mailto:daisy_murdoch@yahoo.co.uk)

[@daisymurdochart](https://www.instagram.com/daisymurdochart)

[daisymurdoch.co.uk](http://daisymurdoch.co.uk)



“Largely working in oils, I paint commissioned portraits full of soul. The paintwork is buttery and layered to give luminosity. I also paint still lifes, some satirical and humorous pieces, and enjoy life drawing and painting.”

- Griffin Mill is on the A419 Stroud to Cirencester road. For full directions see page 29 Studio upstairs from Pegasus Art.  
Access: ●





**AUTUMN ARTS TRAIL THRUPP**  
open studio weekends 12-13+19-20 October



## 20 exhibition

### **GPC Gloucestershire Printmaking Cooperative**

printmaking

Unit 16c, Griffin Mill,

Thrupp GL5 2AZ

01453 350885

info@gpchq.co.uk

gpchq.co.uk

@gpc\_print

GPC offers two floors of studios showcasing etching, linocut, woodcut, screen printing, lithography and more in an exhibition of members' work.

✳ There will be demonstrations of various techniques over the open studio weekends, see page 79.

➔ Griffin Mill is on the A419 Stroud to Cirencester road. For full directions see page 29. Access: ●



**AUTUMN ARTS TRAIL THRUPP**  
open studio weekends 12-13+19-20 October



## 21 studio

### Susie Harding

artist

**Studio I, Gloucestershire Printmaking Cooperative Studios, Griffin Mill, Thrupp GL5 2AZ**

07554 455775

info@susieharding.com

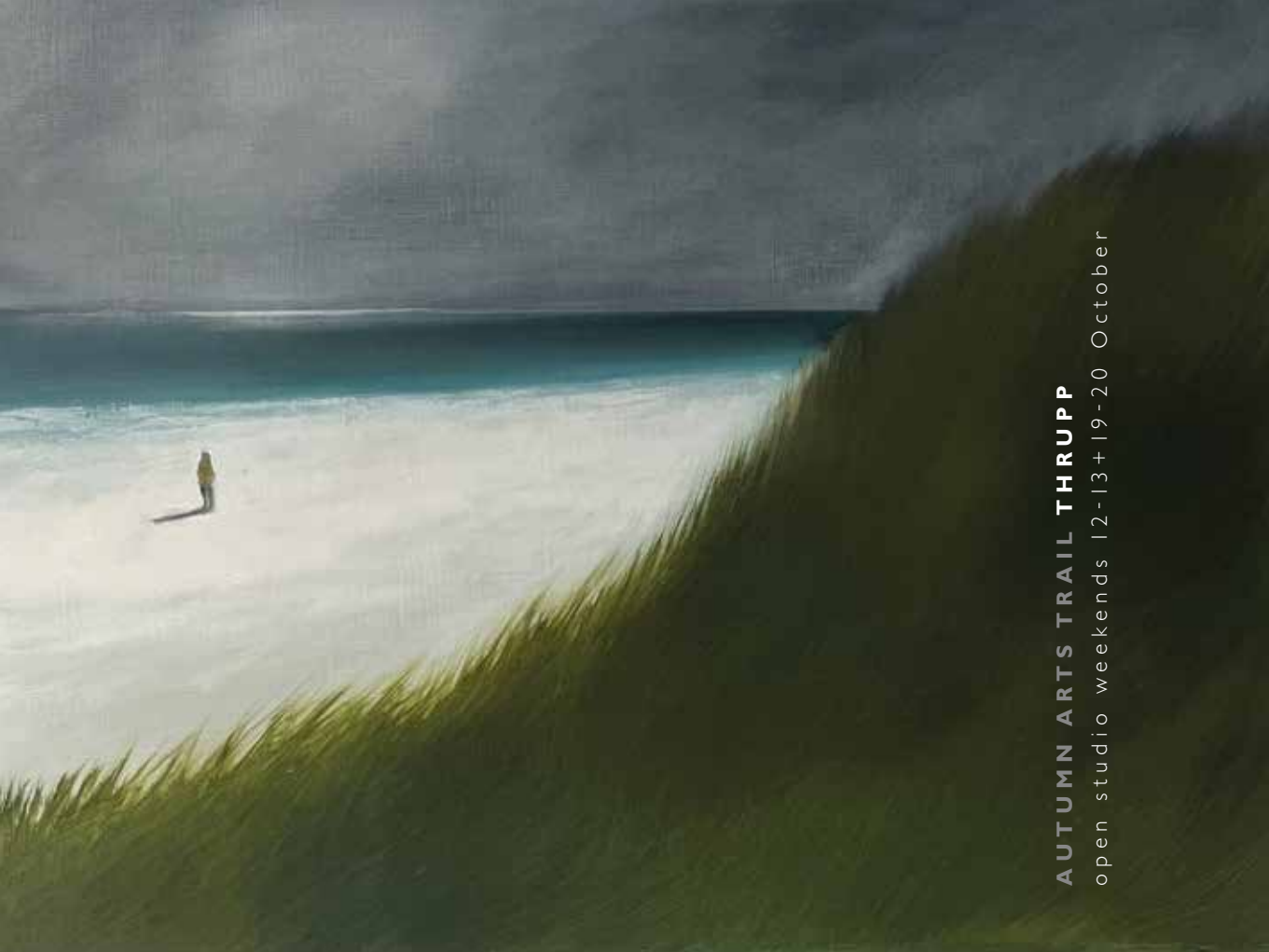
susieharding.com

@susiehardingart



“You may see some new work inspired by jazz music which I have called *The Fifth Element* (two of the paintings are shown here, 16 inches square on canvas). But I am also starting to explore how extraordinary human beings are and why we don't realise it. I think there's a few good stories there! So there may be some exciting work on the walls but, on the other hand, you may see just a very messy studio!”

→ Griffin Mill is on the A419 Stroud to Cirencester road.  
For full directions see page 29. Access: ●



**AUTUMN ARTS TRAIL THRUPP**  
open studio weekends 12-13+19-20 October



## 22 studio

### Kerry Phippen

artist

**Studio 2, Gloucestershire Printmaking Cooperative,  
Griffin Mill, London Road, Thrupp GL5 2AZ**

**07972 265870**

**kerryhippenart1@gmail.com**

**kerryhippenart.com**

**@kerryhippenart**

Kerry is an artist originally from Perthshire in Scotland. Her work is often triggered by seeing a figure or animal in nature offering a sense of scale and signs of life in otherwise quiet landscapes. Kerry has a particular affinity for the Scottish highlands and islands and seeks wild, unspoilt landscapes for contemplation and inspiration for her paintings.

→ Griffin Mill is on the A419 Stroud to Cirencester road.  
For full directions see page 29. Access: ●



## 23 studio

### Wendy Rhodes

printmaker

Studio 2, Gloucestershire Printmaking Cooperative,  
Griffin Mill, London Road, Thrupp GL5 2AZ

07434 589261

[wrhodesart@gmail.com](mailto:wrhodesart@gmail.com)

[wrhodesart.com](http://wrhodesart.com)

[@wrhodesart](https://www.instagram.com/wrhodesart)

Wendy works with a monochromatic palette in order to focus attention onto surfaces, structural elements and the dramatic effects of light, exploring the effect of shadows or rainwater on local bridleways. Drawings in graphite or charcoal, and copper plate etchings, exploit her rich visual language of mark making. She teaches etching and drawing.

- Griffin Mill is on the A419 Stroud to Cirencester road.  
For full directions see page 29. Access: ●





autumn | arts 

# TRAIL

2024

OPEN STUDIOS

CHALFORD

A stroll through the lanes of Chalford with a visit to Victoria Works, a converted mill, is the backdrop for a multidisciplinary mixture of contemporary and traditional art & craft.

lizzie mabley



[WWW.AUTUMNARTS.ORG](http://WWW.AUTUMNARTS.ORG)





## AUTUMN ARTS TRAIL CHALFORD

open studio weekends 12-13+19-20 October

### 24 studio

#### Susanna Birley

artist

2 Anchor Terrace, High Street, Chalford GL6 8DS

01453 731167

[anna@annabirley.plus.com](mailto:anna@annabirley.plus.com)

[susannabirley.co.uk](http://susannabirley.co.uk)

“Experimenting with textural effects and inspired by the natural world, my watercolour paintings (both naturalistic and abstract) seek to exploit the beautiful transparent and unpredictable qualities of this exciting medium.” Abstract collages, cards, ceramic cats and birds are also for sale. Terracotta and bronze portrait heads are displayed.

- Take A419 from Stroud to Cirencester. After approx. 4 miles, and past large church on left, fork left up Chalford High Street. In about quarter mile (8 mins walk) Studio signs on right. Limited parking. Access: ●





## AUTUMN ARTS TRAIL CHALFORD

open studio weekends 12-13+19-20 October

### 25 studio

#### Bill Rickinson

ceramicist

2 Anchor Terrace, High Street, Chalford GL6 8DS

01453 731167

[anna@annabirley.plus.com](mailto:anna@annabirley.plus.com)

“I make thrown and hand-built ceramic forms using stoneware clay and glazes. Many are combined with found pieces of natural wood, stone or shells. I design each ceramic piece to reflect and enhance the character of the found object itself.”



- Take A419 from Stroud to Cirencester. After approx. 4 miles, and past large church on left, fork left up Chalford High Street. In about quarter mile (8 mins walk) Studio signs on right. Limited parking. Access: ●



## 26 studio

### Mandy Coppes-Martin

visual artist

Victoria Works Studios, London Road,

Chalford GL6 8HN

07586 368175

acoppes@me.com

mandycoppes-martin.com

@mandy\_c\_martin

"I enjoy tracking the passage of time and seeing how things change or evolve. I attempt to capture the fascinating moment something starts disintegrating and then redirect that metamorphosis into an object with a new story. That particular moment of change is what I find most beautiful – catching the breakdown of the object in the act, so to speak."

- Victoria Works is on the A419 London Road next door to the Lavender Bakehouse. Parking is available on the roadside and in the lay-by on the Stroud side of the building. Access: ●



open studio weekends 12-13+19-20 October  
**AUTUMN ARTS TRAIL CHALFORD**





**AUTUMN ARTS TRAIL CHALFORD**  
open studio weekends 12-13+19-20 October

**27 studio**

**Katerina Gibb | The Upholsteress**  
traditional upholstery

**Studio 3, Victoria Works Studios, London Road,  
Chalford GL6 8HN**

**07767 777038**

**katerina@theupholsteress.com**

**theupholsteress.com**

**@theupholsteress**



Stitching is in Katerina's DNA – her great grandmother was a milliner with a store on London's Regent Street, her grandmother made handbags and other leather goods, and her mother a couturier who designed and made wedding dresses. Katerina herself upholsters antique and decorative furniture by hand, using traditional techniques: hand-stretched webbing, hand-tied springs and hand-stitched seats. She reuses existing stuffings where possible, and introduces only natural untreated new materials – coir, horsehair, hessian, linen and calico. Katerina is a certified member of the Guild of Traditional Upholsterers and winner of the Guild Challenge Trophy in October 2023.

→ Victoria Works is on the A419 towards Cirencester.  
For full details see page 43. Access: ●







## AUTUMN ARTS TRAIL CHALFORD

open studio weekends 12-13+19-20 October



## 28 exhibition

### Emily Johnson | Lampshade Rebellion

textile artist

Studio 4, Victoria Works Studios, London Road,  
Chalford GL6 8HN

07886 361787

@lampshade\_rebellion

[lampshaderebellion.co.uk](http://lampshaderebellion.co.uk)



Emily Johnson of Lampshade Rebellion creates unique, maximalist lampshades reusing old frames, celebrating colour, texture and pattern. Each hand-made piece transforms an old frame into a vibrant statement piece. "With my lampshades I hope to inspire others to bring a little extravagance into their homes."

→ Victoria Works is on the A419 towards Cirencester.  
For full details see page 43. Access: ●



## 29 exhibition

### Lizzie Mabley

fabric designer, printmaker

**Studio 4, Victoria Works Studios, London Road,  
Chalford GL6 8HN**

07801 784173

[lizzie@lizziemabley.co.uk](mailto:lizzie@lizziemabley.co.uk)

[lizziemabley.co.uk](http://lizziemabley.co.uk)

[@lizziemableyfabrics](https://www.instagram.com/lizziemableyfabrics)

Lizzie Mabley is a printmaker and fabric designer. Lizzie draws inspiration from her environment - notably the flora and fauna of her garden. Each design starts with a hand-drawn sketch which she transfers to lino, then carves and prints by hand. Some designs are transferred to silk screen, others are scanned and printed digitally. Lizzie's designs purposefully retain their 'block-printed' feel and each tells a story of its hand-made origin. Her work is fresh and joyful, often quirky and always colourful.

- Victoria Works is on the A419 towards Cirencester.  
For full details see page 43. Access: ●



open studio weekends 12-13+19-20 October  
**AUTUMN ARTS TRAIL CHALFORD**





**AUTUMN ARTS TRAIL CHALFORD**  
Two weekends 12-13 + 19-20 October



## 30 studio

### Sadie Rowlands

mosaics

**Studio 1, Victoria Works Studios,  
London Road, Chalford GL6 8HN**

07724 609656

smrowlands21@hotmail.com

@mosaics\_by\_sadie

"I am a mosaic artist and teacher, working in glass and ceramic tile to produce a range of indoor and outdoor decorative pieces. I enjoy experimenting with different materials and styles, including recycled china.

Turning clients' precious but broken items into a piece of artwork to treasure is very rewarding. I am also passionate about teaching others and the mental health benefits of creating art."

→ Victoria Works is on the A419 towards Cirencester.  
For full details see page 43. Access: ●

autumn | arts 

# TRAIL

2024

OPEN STUDIOS

sarah middleton

## PAINSWICK VILLAGE

Explore the churchyard and backstreets of this historic village.

Eight very different artists present their new work  
in studios and exhibitions.



[WWW.AUTUMNARTS.ORG](http://WWW.AUTUMNARTS.ORG)



### 31 studio

#### Jane Garbett

painter

**Artist's Studio, Vicarage Street, Painswick GL6 6XS**

07902 751515

[janegarbett.artist@gmail.com](mailto:janegarbett.artist@gmail.com)

[janegarbett.co.uk](http://janegarbett.co.uk)

@jane.garbett

Jane's painting delves into the intricate interplay of layered colours and repetitive mark making. Each stroke echoes life's journey, its twists, turns and uncertainties, celebrating our frailty and the beauty found in imperfection. The paintings embody the essence of transience and the appreciation of the imperfect. Through flawed lines and delicate layering Jane seeks to evoke a sense of introspection and connection to the ephemeral nature of existence. Ultimately, her work serves as a visual narrative of the human experience, inviting viewers to embrace life's imperfections with grace and acceptance.



- From Stroud A46 towards Cheltenham, take the first right in Painswick after traffic lights, follow the road down bearing left at Hamptons. The studio is 200m on the right. Limited parking. Access: ●







## 32 exhibition

**AUTUMN ARTS TRAIL PAINSWICK**  
open studio weekends 12-13+19-20 October

### **Sue Cridland**

artist

**The Painswick Centre,  
Bisley Street,  
Painswick GL6 6QQ**

**07971 622669**

[suemcridland@icloud.com](mailto:suemcridland@icloud.com)

[suecridland.com](http://suecridland.com)

[@sue\\_cridland](https://www.instagram.com/sue_cridland)

Sue is an artist working with abstract shape and form. Her artworks are constructed as paintings, collages and/or stitchings using mainly acrylic, linen, felt, thread and other textiles. The loosely aligned geometric shapes reflect oppositions and conjunctions across space and time. Each artwork is informed by its relationship to the history of abstract geometric art. Sue is interested in the spatial fabrics of the universe, networks and labyrinthine pathways. These ideas form the context that is coded into her artworks.

- A46 from Stroud towards Cheltenham, take the first right in Painswick after the traffic lights into Bisley Street. The Painswick Centre is on the left with ample parking. Access: ●





## AUTUMN ARTS TRAIL PAINSWICK

open studio weekends 12-13+19-20 October



### 33 exhibition

#### Linda Davies

artist

**The Painswick Centre, Bisley Street,  
Painswick GL6 6QQ**

07712 291794

[lindadavies3@yahoo.co.uk](mailto:lindadavies3@yahoo.co.uk)

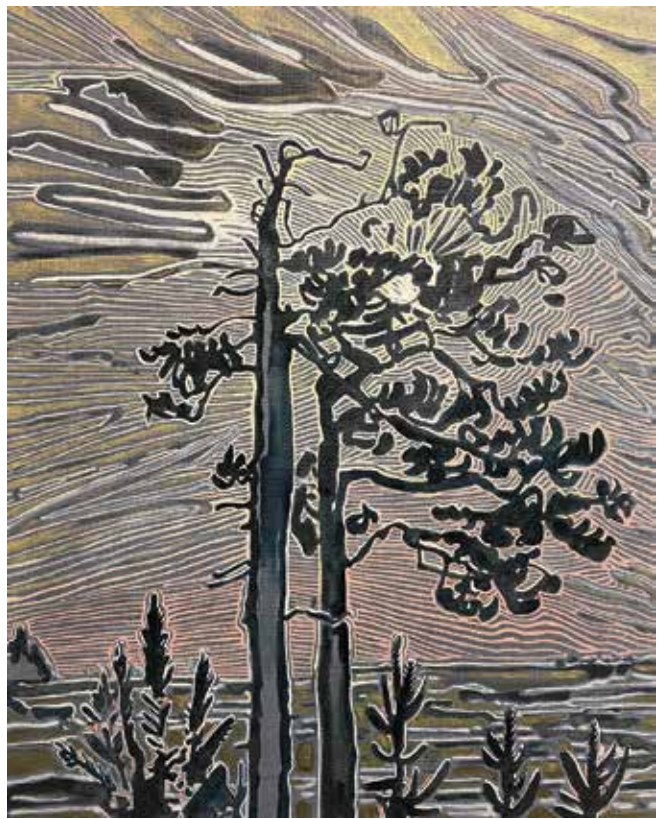
[@lindadaviesartist](https://www.instagram.com/lindadaviesartist)

Linda Hobbs uses painting, drawing and printmaking to represent fluid and transitional spaces. For many years this interest focused on the north Cornwall coast, working from a remote studio overlooking the Camel Estuary. She would also take canvas and lay it directly on the river bed, incorporating the natural materials around her. The continual changes of light, tide, weather and mood were a key element in progressing the paintings to an abstract form. Now working in Painswick, her interest is transitioning to include the representation of people within the local landscape, using the same methods of colour, form and texture.

→ In the village off the A46 from Stroud towards Cheltenham.  
See page 52 for full details. Access: ●



**AUTUMN ARTS TRAIL PAINSWICK**  
open studio weekends 12-13+19-20 October



## 34 studio

### Ange Mullen-Bryan

artist

**Studio 6, The Painswick Centre, Bisley Street,  
Painswick GL6 6QQ**

07722 067894

[alenapost2@yahoo.com](mailto:alenapost2@yahoo.com)

[angemullenbryan.com](http://angemullenbryan.com)

[@ange\\_jolene](https://www.instagram.com/ange_jolene)

Ange is inspired by the lakes, forests and skies of a vast Swedish landscape. At once beautiful and disconcerting, her paintings are defined by a particular Nordic light and yet they have a darker narrative. Her work is enticing, intimate and timeless. "I weave threads of paint to create exaggerated, luminous landscapes. I invite an escape into a kind of utopia, where you can smell freedom and pine in the air. Yet these paintings tell darker tales of tension, foreboding and longing; I dress them up in the fabric and costume of colour and light."

→ In the village off the A46 from Stroud towards Cheltenham. See page 52 for full details. Access: ●



## AUTUMN ARTS TRAIL PAINSWICK

open studio weekends 12-13+19-20 October

### 35 exhibition

#### Aly Lloyd

artist

**The Painswick Centre,  
Bisley Street, Painswick GL6 6QQ**

07909 442602

[byalloyd@gmail.com](mailto:byalloyd@gmail.com)

[alloyd.co.uk](http://alloyd.co.uk)

@byalloyd

Aly Lloyd is a contemporary painter whose work represents a unique blend of expressive figurative depictions and contrasting geometric abstractions. Central to her practice is the exploration of the relationship between free-flowing natural form and the fixed lines, angles and points of mathematical shape. Her work is a self-expressive and reflective practice, and her subjects typically characterise ethereal symbols of female strength and resilience. Her work has been featured in numerous publications and exhibitions including Saatchi Art, the Society of Women Artists, Sothebys, Tatler and the World of Interiors.

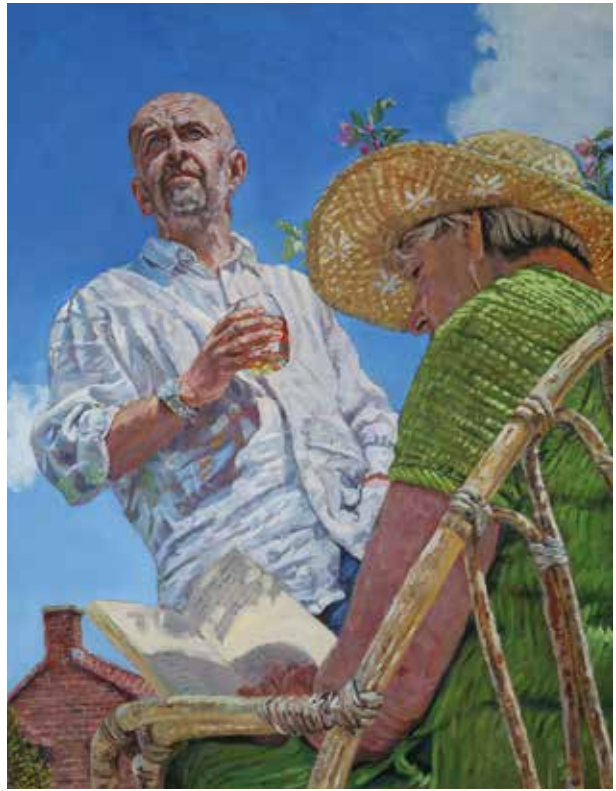


→ In the village off the A46 from Stroud towards Cheltenham. See page 52 for full details. Access: ●





**AUTUMN ARTS TRAIL PAINSWICK**  
open studio weekends 12-13+19-20 October



## 36 exhibition

### Howard Mason

artist

**The Painswick Centre,  
Bisley Street, Painswick GL6 6QQ**

07747 332163

lamfam9@outlook.com

howardmasonart.com

@howard\_mason\_art

Howard likes to paint people and is fascinated by their expressions, feelings and moods. Ideas for his work often come out of the blue and he enjoys developing these concepts in paint. He also gets inspiration from current affairs and music. His paintings are mainly in oil.

→ In the village off the A46 from Stroud towards Cheltenham. See page 52 for full details. Access: ●



open studio weekends 12-13+19-20 October  
**AUTUMN ARTS TRAIL PAINSWICK**



## 37 exhibition

**Sarah Middleton**  
painter

**The Painswick Centre,  
Bisley Street, Painswick GL6 6QQ  
07990 587967**

[sarah@sarah-middleton.co.uk](mailto:sarah@sarah-middleton.co.uk)  
[sarah-middleton.co.uk/](http://sarah-middleton.co.uk/)  
[sarahmiddletonfineart](http://sarahmiddletonfineart)



“I often paint using a single, large brush, letting the water and pigments flow together, watching the magic happen. The joy comes in the meditative quality of painting; the moment a drop of intense colour hits a white sheet of paper is one of pure visceral pleasure for me. Painting has always felt like a positive act, full of possibility - the very act of creating something from nothing is always going to be a win. I aim to capture the seasons that provide a → structure for our lives, footsteps that tread the same comforting paths or bravely find new ones.”

In the village off the A46 from Stroud towards Cheltenham.  
See page 52 for full details. Access: ●



**AUTUMN ARTS TRAIL PAINSWICK**  
open studio weekends 12-13 + 19-20 October

**38 studio**

**Nadia Ryzhakova**

artist

**The Painswick Centre,  
Bisley Street, Painswick GL6 6QQ**

**07803 521574**

[nadia@nadiaryzhakova.com](mailto:nadia@nadiaryzhakova.com)

[nadiaryzhakova.com](http://nadiaryzhakova.com)

[@nadia\\_ryzhakova](https://www.instagram.com/nadia_ryzhakova)

Nadia Ryzhakova is a British artist of Russian descent. She creates fluid art that narrates stories. She finds harmony in the chaos of the acrylic pouring technique, a method that allows paint to flow and form patterns that evolve into organic forms that echo the natural world around us; trees, clouds, water currents and the cosmos emerge from the surface. Within this vibrant tableau, figures and landscapes merge and interact, weaving tales. Nadia often uses her own children as models, through whom she revisits memories from her own childhood.



→ In the village off the A46 from Stroud towards Cheltenham.  
See page 52 for full details. Access: ●







autumn | arts 

# TRAIL

2024

OPEN STUDIOS

## PAGANHILL + WHITESHILL

On the threshold of Stroud and Whiteshill, the Abolition Arch was built in 1834 by Henry Wyatt to commemorate the act of Parliament that finally abolished slavery. On towards Whiteshill you'll discover the creative cluster that includes painting, sculpture, printmaking, pottery and textile art.



[WWW.AUTUMNARTS.ORG](http://WWW.AUTUMNARTS.ORG)

photo: © al mcaffrey

**exhibitors**

**Maggie Howe**

**Elizabeth Lee**

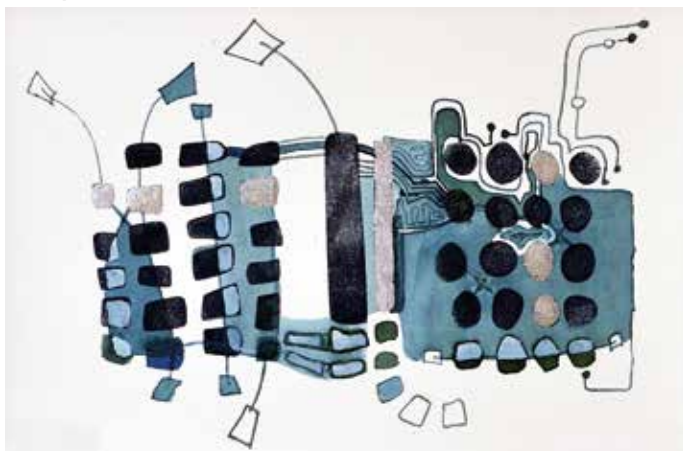
**Mandy Scott**

elizabeth lee



mandy scott

maggie howe



**39 exhibition**

**CHANGE<sup>3</sup>**

painting, sculpture  
and printmaking

**2 Field Place, Paganhill,**

**Stroud GL5 4BB**

**07710 009789**

**maggiehowe9@gmail.com**

**Change3art.co.uk**

**@change3art**

“As friends and artists we are delighted to hold our first joint exhibition of art and sculpture at the new occasional arts venue, *2 Field Place*, which is a historic house both home and workplace to our friend and owner Lucia Simon. *Change* is a new body of work by Mandy Scott, Elizabeth Lee and Maggie Howe responding to our personal experiences of change - in ourselves, our families, our home and work, and our surroundings - particularly the buildings, gardens and changing story of *Field Place*.”

\* *Also open at other times by arrangement.*

→ At the Maypole in Paganhill, turn left into Park End. The entrance to *Field Place* is directly opposite the Old Crown Pub. Parking is on Park End or follow the signposts to additional parking. Access: ●

**AUTUMN ARTS TRAIL PAGANHILL**  
open studio weekends 12-13+19-20 October





**AUTUMN ARTS TRAIL WHITESHILL**  
 open studio weekends 12-13+19-20 October



## 40 studio

### Sabine Kaner

textile artist

**Marycroft, Farmhill Lane,  
Stroud GL5 4DD**

07912 520980

sabine.kaner@gmail.com

sabinekaner.com

@sabinemake

“I am a fine art textile artist working with collage, mixed media, embroidery, repurposed fabrics, found materials and hand stitch. My images use symbols and metaphors within complex narratives to tell personal stories/experiences, reflections of our time, alongside our inter-connectedness to the natural world. I continue to exhibit and teach workshops across the UK and collaborate with other artists. I invite you to my open studio to see pictures and related items.”



✳️ *Invited guest stitcher, Fiona Vann, will be talking about appliqué. Booking is essential. For details see page 80.*

➔ From Stroud head towards Whiteshill. Marycroft is on the left hand side just before you reach Whiteshill. Number 63 bus stops outside. Access: ●





open studio weekends 12-13 + 19-20 October  
AUTUMN ARTS TRAIL WHITESHILL



## 41 studio

### John + Penny West: Lansdown Pottery potters

The Studio, Hill Farm, Main Road,  
Whiteshill, Stroud GL6 6JS  
01453 298567

[lansdownpottery@onetel.com](mailto:lansdownpottery@onetel.com)

[lansdownpottery.co.uk](http://lansdownpottery.co.uk)

[@johnwest9415](https://www.instagram.com/johnwest9415)



“Penny and I have worked together as *Lansdown Pottery* for 25 years. Three years ago, at the end of the Covid pandemic, we decided that we would step back from teaching and concentrate on making and developing our work. This has become a fantastic voyage of discovery bringing about new forms and techniques, collecting natural clays and organic ashes for glazes and learning from each firing, whether in our wood or in our gas kilns. We also take part in a number of national pottery festivals over the summer months and the trail will bring to an end what will have been a busy few months.”

→ Drive through the village of Whiteshill. Well signposted at the crest of the hill. No. 63 bus from Stroud to Hill Farm. Access: ●



# SOFAS & STUFF

Choice, not compromise



Woodchester Mill, Selsley Road, North Woodchester,  
Stroud GL5 5NN

01453 700812 | [www.sofasandstuff.com](http://www.sofasandstuff.com)



autumn | arts 

# TRAIL

2024

OPEN STUDIOS

## NAILSWORTH

Three Storeys is a multi-functional creative venue in the heart of Nailsworth, with makers' studios and a great café. It's the venue for the Trail's *Taster Exhibition*. A short distance away is Ruskin Mill at the head of a beautiful lake overlooked by the café balcony. Two inspiring young artists will be exhibiting in the gallery here. Up Spring Hill you will find a really intriguing retrospective collection of artworks by Geoff Sumpter, creative and prolific. Winding up the famous *W* towards Box, visit the working studio of Rod Nelson, consummate printmaker.



[WWW.AUTUMNARTS.ORG](http://WWW.AUTUMNARTS.ORG)





**AUTUMN ARTS TRAIL NAILSWORTH**  
open studio weekends 12-13+19-20 October



## 42 studio

### Clare Bassett

printmaker and jeweller

**Three Storeys, Old Bristol Road, Nailsworth GL6 0JE**

07740 151313

[clarebassett@aol.com](mailto:clarebassett@aol.com)

[clarebassett.com](http://clarebassett.com)

“I have worked as a printmaker for over 30 years, exploring lithography, mono print and linocut. My subject is always the female figure. I play with narratives looking at life’s moments of decisions, wonder, confusion and solitude. For the last decade, I have also been learning the art of silversmithing and enamelling, which is a wonderful opportunity to work with decoration, not content.”

→ Three Storeys is adjacent to Nailsworth Town Hall. Steps to first floor studios. Ample parking. Access: ●

\* Ground floor café, gallery and toilets are fully accessible. Access: ●



**AUTUMN ARTS TRAIL NAILSWORTH**  
 open studio weekends 12-13+19-20 October

**43 studio**

**Emma Leyfield-Valerian**  
 illustrator  
**Studio 9, Three Storeys,**  
**Old Bristol Road,**  
**Nailsworth GL6 0JE**  
 07584 436655  
 emma@valerian.co.uk  
 www.valerian.co.uk  
 @valerianstudio

Emma is currently studying an MA in Children's Book Illustration at Anglia Ruskin University. She illustrates regularly for the English Garden Magazine while teaching workshops around Gloucestershire. Her work is inspired by the simple delight of beautiful things. Observed and studied in a pocket sketchbook, these paintings feed into larger pictures and ideas, in the style of traditional hand-drawn illustrations. The pages are full of vegetables, grown at her allotment, eclectically mixed with sketches of the people of Stroud. Specialising in catching the character of her figures, Emma is often found with her sketchbook at the Farmers Market.

→ Three Storeys is in the town centre.  
 See page 66 for full details. Access: ●





## 44 studio

### Hannah Linfoot

artist

**Studio 7, Three Storeys, Old Bristol Road,  
Nailsworth GL6 0JE**

07766 721402

[hannahlinfoot@yahoo.co.uk](mailto:hannahlinfoot@yahoo.co.uk)

[hannahlinfoot.co.uk](http://hannahlinfoot.co.uk)

[hannah\\_linfoot\\_art](https://www.instagram.com/hannah_linfoot_art)



Hannah is a self-taught artist. After a career in the charity sector and three children she rebuilt her confidence and skill by using every second that childcare allowed to draw and paint, fuelled by strong tea and supportive teachers. Working in oils her paintings are bold, expressive and rich in colour. She has a distinctive style which brings to life the atmosphere of her subjects. The inspiration for her paintings comes from the things she loves, mainly freshly dug vegetables, and flowers on the kitchen table. She also loves a landscape. A childhood in Dorset and living in rural Gloucestershire, she's never far from inspiration.

→ Three Storeys is in the town centre.  
See page 66 for full details. Access: ●





**AUTUMN ARTS TRAIL NAILSWORTH**  
open studio weekends 12-13+19-20 October

**45 studio**

**Jan Petrie**

fine art painter

**Studio 5, Three Storeys, Old Bristol Road,  
Nailsworth GL6 0JE**

07732 166265

janpetriel@gmail.com

janpetrie.art

@jan\_turk\_petrie

Jan Petrie is a fine art painter. She has exhibited in solo and collective shows in London and all over England. Her work is held in private collections in the UK and overseas. Jan's paintings are deeply rooted in and inspired by the English countryside as well as some of the extraordinary places she has visited. She aims to convey a pared-down, elemental sense of place and mood – the impressions that linger in her memory. Working in oils, Jan sometimes bonds metal leaf to sections of the canvas for the specific light they lend to the finished surface.

→ Three Storeys is in the town centre.  
See page 66 for full details. Access: ●





**AUTUMN ARTS TRAIL NAILSWORTH**  
open studio weekends 12-13 + 19-20 October

## 46 studio

**Vanessa Wilson**  
artist

**Three Storeys, Old Bristol Road, Nailsworth GL6 0JE**

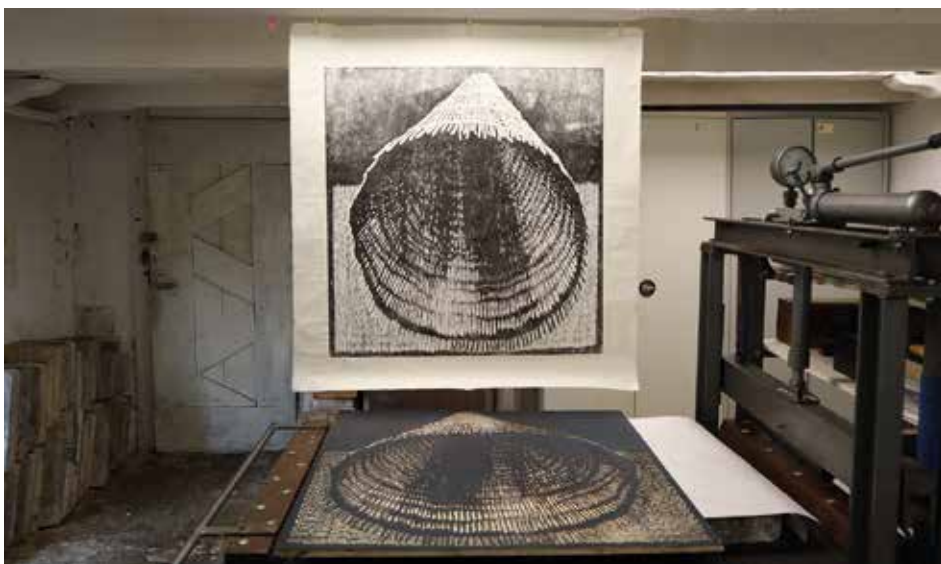
**07872 360140**

[ms.vanessa.wilson@icloud.com](mailto:ms.vanessa.wilson@icloud.com)

[@vanessawilsonpaintings](https://www.instagram.com/vanessawilsonpaintings)

“Environment does impact my work, but often it can be the memory of a place that forms the basis of a painting. I use colour and shape to create a land or city scape and the inclusion of figures generates a narrative that the viewer can interpret as they like.” Vanessa was born in Karachi in 1969 and spent her early childhood in Australia. She gained her degree in Fine Art Painting from Manchester Polytechnic in 1991 and has continued to make and exhibit her work in the UK, Spain and Gibraltar.

→ Three Storeys is in the town centre.  
See page 66 for full details. Access: ●



open studio weekends 12-13+19-20 October  
**AUTUMN ARTS TRAIL NAILSWORTH**

## 47 exhibition

### Charlie Ash

artist/printmaker

**Ruskin Mill Gallery, Old Bristol Road,**

**Nailsworth GL6 0LA**

07856 563996

[charlieashprint@gmail.com](mailto:charlieashprint@gmail.com)

[charlieashprint.com](http://charlieashprint.com)

[@charlieash](https://www.instagram.com/charlieash)



Charlie is an artist and printmaker based in Gloucestershire. He is currently on a residency at Prema Arts Centre in Uley (2023-2025). Charlie works towards an immersion in mark making, started through drawing during his BA studies at Falmouth and since developed into printmaking. He enjoys testing how mark making happens in a kind of ecosystem, particularly apparent in the phenomena of printmaking. Hand-made marks absorb other forces and develop into surfaces of wood, stone or metal which seem to have a life of their own.

- Take the Old Bristol Road, B4058 to Horsley and the recycling centre. After the houses there is a left turning into Brookdale, signposted *Ruskin Mill Events Parking*. Ruskin Mill Gallery and Café is just up the road on the same side. Disabled parking is in front of the mill building. Access: ●





**AUTUMN ARTS TRAIL NAILSWORTH**  
open studio weekends 12-13+19-20 October



## 48 exhibition

### Isobel Harper

artist

**Ruskin Mill Gallery, Old Bristol Road,**

**Nailsworth GL6 0LA**

07494 572967

[isobelfedden@hotmail.co.uk](mailto:isobelfedden@hotmail.co.uk)

“I studied Fine Art at Leeds Arts University and am now studying letter carving in stone as well as working across various lettering arts. My work is a mix of research-led and craft-based practices. I am focused on personal histories, particularly relating to geographical contexts. I’m also interested in how walking can shape or form an art practice.”

→ The Mill is on the B4058 Old Bristol Road.  
For full directions see page 69. Access: ●



## 49 studio

### Geoff Sumpter

artist

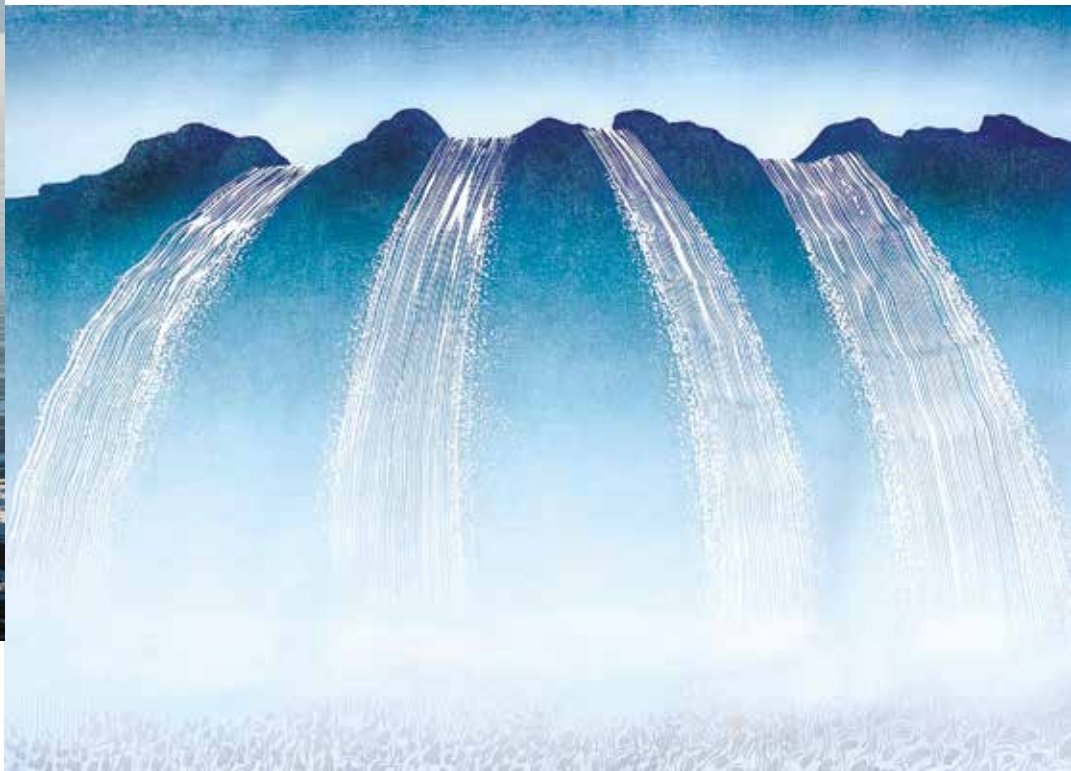
Vineyard View, 6 Norton Ridge, Nailsworth GL6 0TN  
07990 513021

Geoff was a visualiser and his work is all about the imagination. It's everywhere! Drawing inspiration from his seaside background of funfairs, boats, amusement arcades as well as his family, he created artwork with a huge sense of fun through a vast range of media. He made for the love of creating. His work ranges from oil paintings to multi-coloured model boats or highly detailed naval replicas as well as a huge collection of brooches, mainly carved from wood and highly painted.

- From the roundabout in Nailsworth on the A46 turn up Spring Hill. At the second roundabout on Spring Hill, at the top by Forest Green Rovers, turn right. Follow the road down and take the first turning on the left which is Norton Ridge. Vineyard View is at the end of the cul-de-sac with plenty of parking. Lots of steps. Access: ●

open studio weekends 12-13+19-20 October  
**AUTUMN ARTS TRAIL NAILSWORTH**





## 50 studio

### Rod Nelson

woodblock printmaker

Old Lealand Cottage, Box GL6 9HL

07957 890447

[rgnelson@btinternet.com](mailto:rgnelson@btinternet.com)

[woodblock.studio](http://woodblock.studio)

[@rodneywoodcuts](https://www.instagram.com/rodneywoodcuts)

“I make printed images using the very ancient technique of printing from an incised wooden surface. This old medium has not lost its potential for innovative printmaking. Much of my current work is based upon the power of parallel flowing lines and I am fascinated by the breaking up of flow and de-coherence to spray that occurs with waves and waterfalls. I am also working on qualities of surface, undulation and reflection. Last year I was elected as an associate of the Royal Society of Painter-Printmakers.”



→ The studio is very close to Box Village Hall, where one can usually park. Drop down from Minchinhampton Common very near to the Halfway Café. The studio is on the right before the Village Hall car park. Access: ●



autumn | arts 

# TRAIL

OCTOBER 2024

# EVENTS



[WWW.AUTUMNARTS.ORG](http://WWW.AUTUMNARTS.ORG)

# EXHIBITIONS open studio artists +

October 2024



jo millak

## trail artists

### Trail Taster exhibition

Tuesday 8 October – Sunday 20 October

Weekdays 8.30am – 4pm

Saturday – Sunday 11am – 6pm

**Three Storeys, Old Bristol Road, Nailsworth GL6 0JE**

*Free admission*

A chance to see the breadth of Stroud's talent in Three Storeys' multi-functional venue in the heart of Nailsworth, Gloucestershire – a unique community for working together. With ten artist studios, a co-working space, gallery and café, it is a place for creatives to work, meet and have that all important coffee.

Three Storeys has it all when it comes to enjoying art. Come and see the resident artists' open studios, the *Autumn Arts* taster exhibition, and guest artists, all in one place. With our café in the mix too, we are a perfect spot to stop for a while as you enjoy the *Autumn Arts* weekends.

→ Three Storeys is in Nailsworth town centre.

\* For more information see page 10

[threestoreys.co.uk](http://threestoreys.co.uk)

Access: ●



EXHIBITIONS



**artists**

**Luke Agnew**  
**Olli Goodson**  
**Zach Walsh**



images: luke agnew

**Studio 18**  
exhibition

**Saturday 12 October – Sunday 3 November**  
**open Wednesday to Sunday 10am – 6pm**  
**Studio 18, Hope Mills Business Centre,**  
**Brimscombe GL5 2SE**

*Free admission*

This exhibition is a visual onslaught, with works sprawling across both canvas and walls. Luke Agnew, Zach Walsh and Olli Goodson have collaborated on large scale works highlighting ecological apathy sit alongside towering repeat prints of *Vegan Spam*. It is vibrant and cutting.

The exhibition aims to shoulder barge through the sterility of the standard gallery space, creating an exciting visual feast of colour and subject matter.

→ Studio 18 is located along the towpath between Stroud Brewery and The Ship Inn, Brimscombe. There is no available parking on site. Parking spaces can be found near The Ship Inn, with a short walk along the canal, or park up at the beginning of the estate and walk through past the mechanics.

\* For more information:  
**07986 521792**  
**luke\_agnew@hotmail.com**  
**strouddecorator.co.uk**  
**@agnewart**  
Access: ●





# EXHIBITIONS

## open studio artists +

October 2024

trail artist

Annie Hutchinson



EXHIBITIONS

### Annie Hutchinson exhibition

Wednesday 9 October  
– Sunday 20 October  
open daily 10am – 4pm

The Yard Gallery,  
Withey's Yard,  
55 High Street,  
Stroud GL5 1AS

Free admission

Hand and machine-stitched wall pieces and three-dimensional papier-mâché.

\* For more information see page 16

07792 695623

Access: ●

trail artist

Deborah Cox



### Landscapes exhibition

Friday 11 October  
– Thursday 31 October  
open daily 10am – 4pm  
closed Tuesdays

Aleph Contemporary  
Gallery, Station Road,  
Stroud GL5 3AR

Free admission

Paintings and prints inspired by the visible and the non-visible.

\* For more information see page 14

07740 950779

Access: ●

trail artists

Charlie Ash

Isobel Harper

### Ruskin Mill exhibition

Wednesday 9 October  
– Thursday 31 October  
open daily 10am – 4pm

Ruskin Mill Gallery,  
Old Bristol Road,  
Nailsworth GL6 0LA

Free admission

Charlie Ash and Isobel Harper's work has been guided by family histories in the arts and crafts. Charlie is the grandson of Ken Cox, a sculptor in the Concrete Poetry movement of the 1960s, and Isobel the granddaughter of Bryant Fedden, a letter-cutter and sculptor who founded renowned craft workshops.

This exhibition presents Charlie and Isobel's work, exploring the resonance of their grandfather's work.

\* For more information see pages 71 and 72

Access: ●



isobel harper

# DEMONSTRATIONS

## trail artists

Chris Bingle

Sarah Middleton

## other artists

Jane Fisher

Mary Furnival

Ollie Goodson

Penel Kirk

Douglas Kirkland

Bethan Nutt



## Pegasus Staff

exhibition

open studio weekends

11am – 6pm

**Pegasus Art, Griffin Mill,**

**London Road,**

**Thrupp GL5 2AZ**

*Free admission*

Discover the talents of Pegasus staff in Studio One.

- \* For more information see pages 18, 57 and 82  
**01453 886560**  
**pegasusart.co.uk**  
Access: ●

jane fisher



## trail artists

GPC



## Gloucestershire Printmaking Cooperative

demonstrations

open studio weekends

**Unit 16c, Griffin Mill,**

**Thrupp GL5 2AZ**

*Free admission*

See artists at work. Etching, relief printmaking, silkscreen printing, letterpress, stone and plate lithography.

- \* For more information see page 36  
**01453 350885**  
Access: ●

## trail artist

Penny Campbell



## Pottery

demonstrations

open studio weekends

**Lower Cheyne,**

**Queen's Road,**

**Rodborough GL5 3SN**

*Free admission*

Drop in and catch Penny throwing on the wheel over the weekends.

- \* For more information see page 27  
**07817 437561**  
Access: ●

sabine kaner



TALK

**Appliqué:  
Fiona Vann**

talk

open studio weekends  
at 2pm

**Marycroft, Farmhill Lane,  
Stroud GL5 4DD**

*Free admission*

Fiona Vann will be giving a 45-minute talk on appliqué and the use of velvet in textile art at Sabine Kaner's open studio. Spaces are limited, booking is essential.

\* See page 62

07912 520980

sabinekaner.com

Access: ●

christina bingle



AUTUMN ARTS TRAIL EXTRAS

**The Plot Café**

**Three Storeys, Old Bristol Road,  
Nailsworth GL6 0JE**

**Tuesday 8 October – Sunday 20 October**

**Weekdays 8.30am – 4pm**

**Saturday – Sunday 11am – 6pm**

\* For more information see page 76 Access: ●  
[threestoreys.co.uk](http://threestoreys.co.uk)





# \* EXTRA TRAIL DELIGHTS

The thread of creativity weaves through the valleys even after the studio doors have closed. Take the opportunity to discover more.



## Ruskin Mill Organic Café

Old Bristol Road, Nailsworth GL6 0LA

open Tuesday – Sunday 10am – 4pm

For coffee, cake and lunch (served 12.30-2.30pm). Enjoy the view across the lake from the café balcony. You are welcome to walk along the lakeside path and beyond to the biodynamic market garden and fish farm. Please keep your dog on a lead.

See pages 71 and 72 Access: ●

\* 01453 837527 | [rmt.org](http://rmt.org)

## Pegasus 10% discount\*

Griffin Mill, Thrupp GL5 2AZ

shop open Monday – Saturday 9am – 5pm

Browse this wonderful shop and get 10% off art materials on both Saturdays\*. \*except on bespoke canvases

\* See page 82 [pegasusart.co.uk](http://pegasusart.co.uk)



## Museum Art Gallery, Walled Garden + Shop

Museum in the Park, Stroud GL5 4AF

opening times

open Tuesday to Friday

10am – 4.30pm,

open weekends & bank holidays 11am – 4.30pm

Free admission

Soak up the autumn colours in the arboretum and walled garden. Explore the art and the artefacts in the museum.

\* For more information

01453 763394

[museuminthepark.org.uk](http://museuminthepark.org.uk)

Access: ●

AUTUMN ARTS TRAIL EXTRAS





# Pegasus Art

## OPEN STUDIOS

12th 13th 19th & 20th October

11am - 6pm



### What's On

#### Staff Exhibition

Jane Fisher	Ollie Goodson
Chris Bingle	Penel Kirk
Sarah Middleton	Mary Furnival
Dougal Kirkland	Bethan Nutt

10% off in the art shop both Saturdays\*

\*except on bespoke canvases

### STUDIO ARTISTS

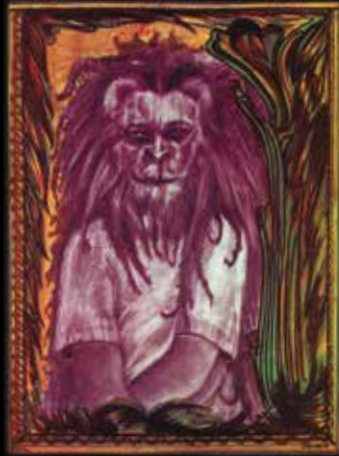
Carol Honess
Max Hale
Daisy Murdoch
Paul Fowler
Hazel Cudmore

Unique artwork for sale at studio prices

Meet the artists, see them at work

Pegasus Art Griffin Mill Stroud Glos GL5 2AZ  
info@pegasusart.co.uk 01453 886560 www.pegasusart.co.uk

# SCRATCH THE SUPER APE.



THE JAMAICAN RELEASES



JEREMY COLLINGWOOD

## THE BLACK ART BOOK



[www.lickitback.co.uk](http://www.lickitback.co.uk)







hazel cudmore

# autumn | arts



john + penny west

Autumn Arts is a not-for-profit arts organisation supporting visual and applied arts, based in Stroud, Gloucestershire. With an annual *Autumn Arts Trail* in October, Autumn Arts nurtures the cultural landscape of Stroud and the area. To join the Autumn Arts mailing list and support our work go to: [www.autumnarts.org](http://www.autumnarts.org)

## \* Autumn Arts

07975 540053

[sue.smee@autumnarts.org](mailto:sue.smee@autumnarts.org)

[@autumnarts24](https://www.instagram.com/autumnarts24)

[autumnarts.org](http://autumnarts.org)

Co-ordinator + Editor **Sue Smee**

Design Art Director **Chris J Bailey 2024**

Website **Jason Warland**

Print **Tewkesbury Printing**





mandy coppes-martin



WWW.AUTUMNARTS.ORG



autumn | arts 

# TRAIL

2024

sabina kaner

a | a



[WWW.AUTUMNARTS.ORG](http://WWW.AUTUMNARTS.ORG)